

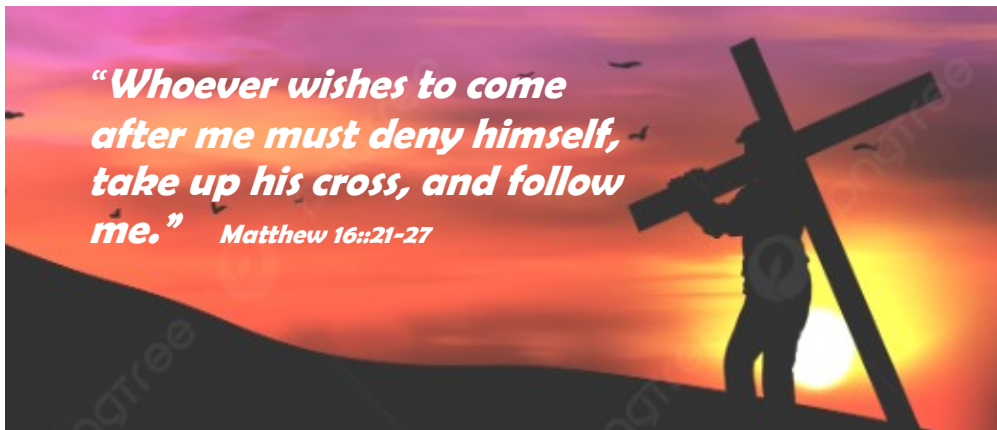
September 3, 2023 Twenty-Second Sunday in Ordinary Time

Sunday Bulletin

St. John Vianney Catholic Church, Kailua

WWW.SAINTJOHNVIANNEYHAWAII.ORG | SJVKAILUAPARISH@RCCHAWAII.ORG

920 KEOLU DRIVE, KAILUA, HI 96734 | 808-262-8317 | REV. VINCENT VU, PASTOR



“Whoever wishes to come after me must deny himself, take up his cross, and follow me.” Matthew 16:21-27

ANNOUNCEMENTS

This weekend's second collection—The Catholic University of America

The diocese will be taking up the National Collection for the Catholic University of America. Catholic University is a national research university with over 5,700 undergraduate and graduate students in more than 250 academic programs in the heart of Washington, D.C. By giving to the collection, you are supporting future Catholic leaders, both religious and lay, who are being formed by an exceptional, faith-rooted education. You also are supporting the University's research and training initiatives that help dioceses and parishes respond to the most pressing needs of their faithful. The Catholic Project—an initiative that aims to heal the breach of trust many have experienced as a result of the crisis in the Church, a Master's program in Ecclesial Administration and Management, and credentialing program that prepares recent graduates to serve as campus ministers are a few examples of how the University is serving our Church and our nation. Scan the QR code on the provided envelopes or visit collection.catholic.edu to learn more and give easily online.

Celebrating 17th Anniversary of the Rededication of St. John Vianney Church

Please plan to stay after Mass for refreshments and hospitality as we celebrate the 17th anniversary of the rededication of our church building. On September 2, 2006, after more than a year of construction, the church was rededicated by Bishop Larry Silva in a formal and joyful Mass. The result was this inspiring space that moved the assembly closer to the altar, increased our space by 2,250 square feet, added a permanent baptismal font and a new chapel under the crucifix.

Praying for the dead is a great act of mercy

Names of our loved ones who have passed away may be added to our Sunday Mass prayer intentions. We pray that their time of purification might be quick and complete and that, through God's grace, they might enjoy the glories of heaven. Please contact the parish office to have your loved one's name added to a specific Mass.

Religious Education Registration is Now Open

Online registration is now open for the following programs which begin next Sunday, September 10. Please go to our parish website's Events page for the link.

- Children's Liturgy of the Word for Grades PreK-2
- Catechesis of the Good Shepherd for Grades PreK-5
- Youth Group for Grades 6-12

5-week Bible Study for a Parent's Busy Life

Join us while your child is in religious education class during this 5-session journey called *A Biblical Walk Through the Mass*. Classes meet on Sundays at 10:15 a.m. every other week beginning October 1. Registration link is available on the parish website.

Prayers for Healing

| | |
|----------------------|---------------------|
| Ruth Alves | Malina Lewczyk |
| Anna Asinsin | Emily Lim |
| Edward Balderston | Kasey Lopes |
| Jim Balderston | Buck Marcum |
| Terry Barnaby | Gloria Malabet |
| Hayes Beissel | Sandy McAulton |
| Sydney Bennett | Juan Mendiola |
| Clark Bernales | Ann Meyer |
| Robert Bernales | Jack Meyer |
| Bimbo Family | Beverly Mink |
| Avarose Marie Braga | Bobby Mink |
| Malia Braga | Audrey Motonaga |
| Michelle Brown | Hope Montalvo |
| Donovan Caldeira | Christian Palacio |
| Sheryl Caldeira | Cayetana Paras |
| Rod Castanha | Kenneth Quirin, Sr. |
| Paul Chinen | James Reis |
| Carolyn Chong | Bill Roman |
| Pat Drury | Linda Roman |
| Herman Encarnacion | Antonio Salcedo |
| John Glorioso, Jr | Par Salehi |
| Tom Glorioso | Barbara Sladovnik |
| Angeline Goh | Deni Smith |
| Jayla Gomes | Bernardo Soriano |
| Milli Gorecki | John Sutton |
| Tim Hudson | Sharon Sweat |
| Sylvia Ann Pao Kruse | Gabrielle Taylor |
| Tony Lambio | Terri Taylor |
| Kailey Jong-Perez | David Teves |
| Jonathan Lewczyk | Paulette Teves |

Rest of Soul

- +Wilhelmina Kealoha Barrett
- +Elizabeth Libby, Funeral Pending
- +Francis Tolentino, Funeral Mass on Sep 15 at 10:30 a.m.

Next Sunday's Readings

1st Reading: Ezekiel 33:7-9

2nd Reading: Romans 13:8-10

Gospel: Matthew 18:15-20

Upcoming Events

- Sat & Sun, Sep 2 & 3, Hospitality Weekend on the Fellowship Lanai after all Masses
- Sat, Sep 2, 5 p.m. Youth-led Mass followed by Youth Ministry Kick-Off Event in the Parish Lounge
- Mon, Sep 4, Parish Office closed in observance of Labor Day
- Fri, Sep 8, 9 a.m. — 12 p.m. Senior's Bingo and potluck in the Parish Lounge. Bring a bagged gift and food to share.
- Sun, Sep 10, Religious Education Classes starts
- Mon, Sep 11, 18 & 25, 7-8 p.m. Baptism Classes in Conference Room #3

Use the QR code at the entrance to the church to read the full edition of the Sunday Bulletin online or in MyParish app for more announcements

Download the music leaflet to sing along during Mass from your smart device.



SCHOOL NEWS

Our school is a blessing for our children and their families and also for our Church community. The first three weeks of classes this school year have flown by, and we are so grateful to have your children with us.

We are very proud of several of our students for their recent achievements. One current and two former students who are siblings were commissioned as parish lectors and will serve at parish weekend Masses throughout the year. Siena-Grace Tufaga, represented the Aloha state, and won the title of Miss Elementary America 6th Grade at the 2023 Miss Elementary America National Pageant held in Little Rock, Arkansas.

On Friday, August 25th, our school attended our first School Mass, hosted by the eighth-grade class. Mahalo to our readers, gift bearers and altar servers who did an amazing job. We are very appreciative of the love and support of several people who helped with the planning and preparation for such a beautiful Mass.



ST. VINCENT DE PAUL SOCIETY

Today, we hear Jesus say to us, “For whoever wishes to save his life will lose it, but whoever loses his life for my sake will find it.” The challenge is to let go so God can lead us. Allow Jesus to lead, follow him in his generosity to the poor and love of those in need. Give generously to help His little ones.

HAWAII CATHOLIC ENGAGED ENCOUNTER, SEPTEMBER 15-17, 2023

We invite you to experience a Catholic Engaged Encounter weekend. Please contact your parish to arrange for a Catholic wedding before registering. The weekend will be held on Oahu at St. Stephen’s Diocesan Center, 6301 Pali Hwy., Kaneohe. To register contact Dcn. Rey & Roxanne Torres at 940-447-5387, or email hawaiiregistration@engagedencounter.com

ALL DONE!

The transformation of the statue of the Blessed Mother is all done! Thanks to Gail Patrick Pao Berengue, the artist, who volunteered her time to repaint the statue to its original brilliance, to Fr. Vincent Vu who did the touch-ups, to Glenn Chong who painted the grotto niche, to JD who moved her to the parish office and who will move her back to the grotto niche. We are grateful to all, especially the Ladies Sodality who planned this summer project for our parish. Mahalo!



RACHEL’S VINEYARD WEEKEND RETREAT OCTOBER 13—15, 2023

For Healing After Abortion. Women, men, family members, and anyone wounded by abortion are welcome.

Registration and participation on retreat is strictly confidential. A suggested donation of \$150 per person covers room, meals, refreshments and materials. Need-based scholarships are available. Space is limited. The retreat is held at St. Anthony Retreat Center, 3351 Kalihi Street, Honolulu, HI 96819.

To register, contact Lisa Shorba at 808-349-5071 or email her at rvinhawaii@gmail.com. For more information, please visit the website at www.rachelsvineyard.org. Rachel’s Vineyard is a recognized ministry of the Respect Life Office of the diocese.

OFFERTORY Our gifts to God to steward the Church

| Week of Aug 19—25, 2023 | Envelopes/Loose | Online Giving | Total | Goal | % of Goal |
|------------------------------|-----------------|---------------|------------|-----------|-----------|
| Sunday Offertory | \$3,507.00 | \$2,177.00 | \$5,684.00 | \$8763.33 | 92% |
| Repair and Maintenance | \$360.00 | \$270.00 | \$630.00 | \$1500.00 | 86% |
| Major Repair and Maintenance | \$65.00 | \$15.00 | \$80.00 | \$576.92 | 55% |



22nd Sunday in Ordinary Time

Thank you for placing the leaflets in the re-cycling box after Mass.

GATHERING SONG Praise, My Soul, the King of Heaven (Leo: Pua Carnation) Hymnal 256

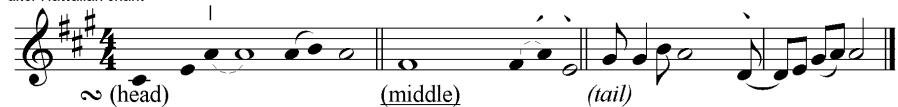
1. Praise, my soul, the King of heaven; To his feet your tribute bring; Ransomed, healed, restored, forgiven, Ever more, his praises sing: Alleluia!
2. Praise him for his grace and favor To his people in distress; Praise him still the same as ever, Slow to chide, and swift to bless: Alleluia!
3. Father-like he tends and spares us; Well our feeble frame he knows; In his hands he gently bears us, Rescues us from all our foes: Alleluia!
4. Angels, help us to adore him; You adore him face to face; Sun and moon, bow down before him, Praise with us the God of grace: Alleluia!

* Doxological verse; for LOH only.

Hua 'ōlelo: Based on Psalm 103[102], Henry Francis Lyte(1793-1847) in his *The Spirit of the Psalms*, 1834, alt.

Leo: *Pua Carnation*, Charles E. King (1874-1950) ©1916,©1943 in *King's Songs of Hawai'i*, alt. All rights reserved.

after Hawaiian chant



GLORY TO GOD

~ Glory to | God in the highest, and on earth peace to people of good will. We praise you, we bless you, we adore you, we glorify you, we give you thanks for your great glory,
 ~ Lord God, | heavenly King, O God, almighty Father. Lord Jesus Christ, Only Begotten Son,
 ~ Lord God, | Lamb of God, ~Son of | the Father, you take away the sins of the world, have mercy on us; you take away the sins of the world, receive our prayer; you are seated at the right hand of the Father, have mercy on us.
 ~ For you | alone are the Holy One, you alone are the Lord you alone are the Most High, Jesus Christ, with the Holy Spirit, in the glory of God the Father. Amen
 R. Mondoy, 2016

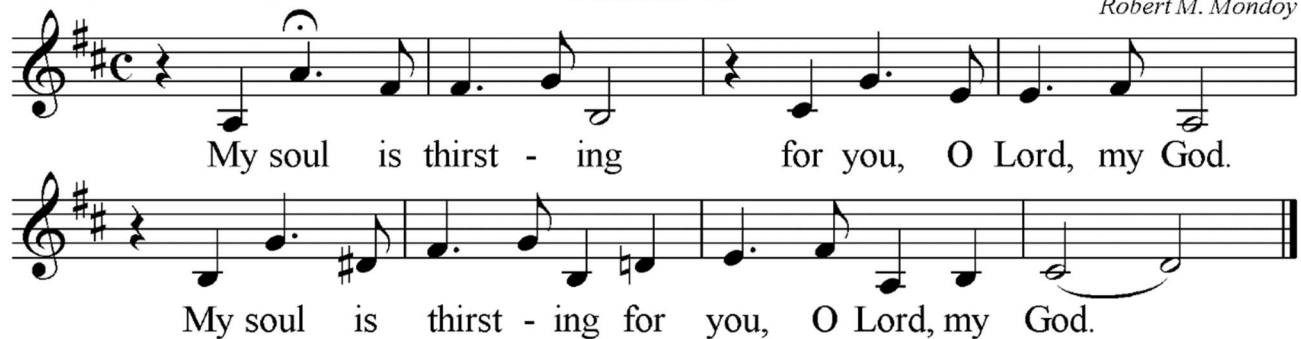


RESPONSORIAL PSALM

Filipino Harana style

Psalm 63⁴

Robert M. Mondoy



1. O God, my God, for you my soul is thirsting, my body pines for you just like a desert land aching, without water and lifeless, weary.
2. So I gaze upon you in your holy temple, a glorious vision of your strength. My lips shall sing out your glory for better than life itself is your great love.
3. I will bless you, my God, with lifted hands I'll bless you. For all my life I'll worship you. My soul shall feast at a banquet so rich that my joyful lips praise you always.
4. You are my help, beneath your wings rejoicing, a constant hymn of praise to you. Yes, God, I cling to your great love; you love me, your right hand upholds me always.

©2006 Mondoy Music. (Harana) [791.5]
 All rights reserved. Used with permission. Go listen: mondoymusic.com

Take Up Your Cross

David Haas

If you lose your life for my sake, you will find it.
 If you want to save your life, let it go. Take up your cross,
 de - ny your - self. Come fol - low me, fol - low me.

1. How will you profit by gaining the world, while you forfeit all of your life? What will you give in return?
2. Before I return in glory I will give you the gift of my love: you will never taste death.

David Haas. © 2001 GIA Publications. All rights reserved. Reprinted with permission under ONE LICENSE, License #A-735407

EUCCHARISTIC ACCLAMATIONS

Mesa Kahiko
Holy RM 211

Ho - ly, ho - ly, ho - ly, Ho - ly Lord, God of hosts.
 Heav - en and earth are full of your glo - ry.
 Ho - san - na in the high - est, ho - san - na in the high - est.
 Bles - sed is he who comes in the name of the Lord. Ho - san - na in the
 high - est, ho - san - na in the high - est.

©1992, 2012 Robert M. Mondoy www.mondoymusic.com. All rights reserved.

Memorial Acclamation

RM 311

P: The mys - tr'y of faith: We pro - claim your death, O Lord,
 and pro - fess your res - ur - rec - tion un - til you come, un - til you come,
 un - til you come a - gain, un - til you come a - gain.

Mesa Kahiko
 ©1992, 2012 Robert M. Mondoy www.mondoymusic.com. All rights reserved.

Amen RM 411

A - men, a - men, A - men, al - le - lu - ia,
 a - men, al - le - lu - ia.

©1992, 2012 Robert M. Mondoy www.mondoymusic.com. All rights reserved.

Final Doxology

Chang-a-lang or chalang-a-lang style, swing eighths RM 511d

For the king - dom, the pow - er and the glo - ry are
 yours now and for - ev - er. now and for - ev - er.

Moloka'i Mass
Lamb of God

Lamb of God, O Lamb of God, you take a - way the
 sins of the world, E a - lo - ha mai, e a - lo - ha mai,
 e a - lo - ha mai ia ma - kou Grant, O grant us peace, grant, O
 grant us peace, Lamb of God, O grant us peace.

©1992 Robert M. Mondoy www.mondoymusic.com. All rights reserved.

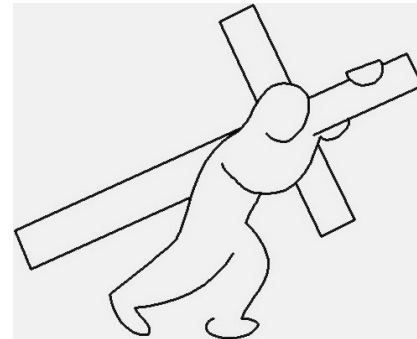
Mesa Kahiko
Lord's Prayer RM 511
 Hawaiian slack-key style, straight eighths

Our Fa - ther, who art in heav - en, hal - lowed be thy name, thy king - dom
 come, thy will be done on earth as it is in heav - en. Give us this day our
 dai - ly bread and for - give us our tres - pass - es as we for - give
 those who tres - pass a - gainst us. And lead us not in - to temp -
 ta - tion but de - liv - er us from e - vil

©1992 Robert M. Mondoy www.mondoymusic.com. All rights reserved.

We remember how you loved us to your death, and still we celebrate, for you are with us here; And we believe that we will see you when you come in your glory, Lord; We remember, we celebrate, we believe.

1. Here, a million wounded souls are yearning just to touch you and be healed. Gather all your people, and hold them to your heart.
2. Now, we recreate your love, we bring the bread and wine to share a meal. Sign of grace and mercy, the presence of the Lord.
3. Christ, the Father's great "Amen" to all the hopes and dreams of ev'ry heart, Peace beyond all telling, and freedom from all fear.
4. See the face of Christ revealed in ev'ry person standing by your side; Gift to one another, and temples of your love.



©1980., GIA Publications, All rights reserved, Used with permission. Reprinted with permission under ONE LICENSE, License #A-735407

LEAVETAKING SONG

With One Voice

Verses



1. Take the Word and go out to ev - 'ry land: shine the
 2. Take the Word to our neigh - bor - hoods and streets: shine the
 3. Take the Word to the peo - ple in des - pair: shine the
 4. Take the Word to the na - tions ev - 'ry - where: shine the



light of Christ for all to see! May the lives of those we touch
 light of Christ for all to see! May we all set out to live
 light of Christ for all to see! May our ac - tions and our deeds
 light of Christ for all to see! May the wit - ness of our lives



— sing praise to God a - bove. Let us sing, we'll sing:
 — in peace and har - mo - ny. They will see and sing:
 — bring com - fort to their needs. And they'll know and sing:
 — trans - form the world a - new. And we'll shine, we'll shine:

Refrain



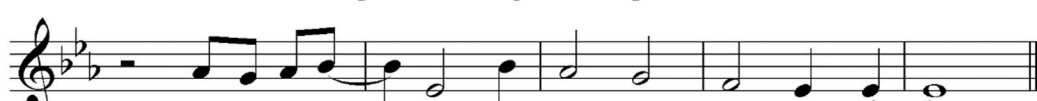
With one voice we'll pass the Word a - long; with one



voice, bring jus - tice to the world. And with



all the an - gels we'll spread the good - ness of God. With all



pow - er and glo - ry the Word of God shall reign.

St. John Vianney Parish

Presents

A Eucharistic Revival

To renew us by enkindling a living relationship
with the Lord Jesus Christ in the Holy Eucharist.



**The Eucharist Explained
In the Catechism of the Catholic Church**

*“All who eat the one broken bread, Christ,
enter into communion with him
and form but one body in him” (CCC 1329).*

A year long focus to further educate our parish community and the Kailua community about the Real Presence of Jesus in the Eucharist



1. (1327) In brief, the Eucharist is the sum and summary of our faith: "Our way of thinking is attuned to the Eucharist, and the Eucharist in turn confirms our way of thinking." In the most blessed sacrament of the Eucharist "the body and blood, together with the soul and divinity, of our Lord Jesus Christ and, therefore, the whole Christ is *truly, really, and substantially* contained."
2. (1324) The Eucharist is "the source and summit of the Christian life." The other sacraments, and indeed all ecclesiastical ministries and works of the apostolate, are bound up with the Eucharist and are oriented toward it.
3. (2181) The Sunday Eucharist is the foundation and confirmation of all Christian practice. For this reason, the faithful are obliged to participate in the Eucharist on days of obligation, unless excused for a serious reason or dispensed by their own pastor. Those who deliberately fail in this obligation commit a grave sin.
4. (1415) Anyone who desires to receive Christ in Eucharistic communion must be in the state of grace. Anyone aware of having sinned mortally must not receive communion without having received absolution in the sacrament of penance.
5. (1396) The unity of the Mystical Body: the Eucharist makes the Church. Those who receive the Eucharist are united more closely to Christ. Through it Christ unites them to all the faithful in one body - the Church.
6. (1387) To prepare for worthy reception of this sacrament, the faithful should fast for at least one hour. This means that we are not permitted to eat food or drink, except for medicine and water. Bodily demeanor (gestures, clothing) ought to convey the respect, solemnity, and joy of this moment when Christ becomes our guest.
7. (2182) Participation in the communal celebration of the Sunday Eucharist is a testimony of belonging and of being faithful to Christ and to his Church. The faithful give witness by this to their communion in faith and charity. Together they testify to God's holiness and their hope of salvation. They strengthen one another under the guidance of the Holy Spirit.
8. (1524) In addition to the Anointing of the Sick, the Church offers those who are about to leave this life the Eucharist as viaticum. Communion in the body and blood of Christ, received at this moment of "passing over" to the Father, has a particular significance and importance. It is the seed of eternal life and the power of resurrection, according to the words of the Lord: "He who eats my flesh and drinks my blood has eternal life, and I will raise him up at the last day." The sacrament of Christ once dead and now risen, the Eucharist is here the sacrament of passing over from death to life, from this world to the Father.

Our Parish Faith Formation Committee encourages
all parishioners to learn more about the Real Presence in the Holy Eucharist

ST. JOHN VIANNEY PARISH
YOUTH MINISTRY

**KICK
OFF**



YOUTH LED MASS @ 5PM

followed by

FOOD, FUN & GAMES @ 6PM

ALL YOUTH IN GRADES 6 - 12 ARE INVITED



YOUNG ADULT EVENT

END OF SUMMER BASH

LABOR DAY
SEPT 4TH
10:00 AM - 3:00 PM

FAMILIES WELCOME

POTLUCK, POOL PARTY, LAWN
GAMES, CONNECT WITH YOUNG
ADULT MINISTRIES ON OAHU

PAEWALANI
45-901 WAILELE RD
KANEHOE, HI 96744



ST. JOHN VIANNEY PARISH



Religious Education

begins

September 10

Catechesis of the Good Shepherd
Grades PreK - 5

Youth Group
Grades 6 - 12

Children's Liturgy of the Word
Grades PreK - 2

FOR MORE INFO CALL:
808-772-5608

online registration available at:
www.saintjohnvianneyhawaii.org

FALL 2023

ST. JOHN VIANNEY PARISH YOUTH MINISTRY

SEPTEMBER

| SU | M | TU | W | Th | F | Sa |
|----|----|----|----|----|----|----|
| | | | | | 1 | 2 |
| 3 | 4 | 5 | 6 | 7 | 8 | 9 |
| 10 | 11 | 12 | 13 | 14 | 15 | 16 |
| 17 | 18 | 19 | 20 | 21 | 22 | 23 |
| 24 | 25 | 26 | 27 | 28 | 28 | 30 |

Youth Led Mass – 5:00P

2

Youth Group – 10:15a

10, 24

Youth Praise and Worship – 1:30P

2, 10, 17, 24

Youth Online Bible Study – 6:30P

4, 11, 18, 25

MS Girls Bible study – 6:30P

15

extra Hour – 6:30P

6, 13, 20, 27

OCTOBER

| SU | M | TU | W | Th | F | Sa |
|----|----|----|----|----|----|----|
| 1 | 2 | 3 | 4 | 5 | 6 | 7 |
| 8 | 9 | 10 | 11 | 12 | 13 | 14 |
| 15 | 16 | 17 | 18 | 19 | 20 | 21 |
| 22 | 23 | 24 | 25 | 26 | 27 | 28 |
| 29 | 30 | 31 | | | | |

Youth Led Mass – 5:00P

7

Youth Group – 10:15a

8, 22

Youth Praise and Worship – 1:30P

1, 7, 15, 22, 29

Youth Online Bible Study – 6:30P

2, 9, 16, 23, 30

MS Girls Bible study – 6:30P

13

extra Hour – 6:00pm

4, 11, 18, 25

NOVEMBER

| SU | M | TU | W | Th | F | Sa |
|----|----|----|----|----|----|----|
| | | | 1 | 2 | 3 | 4 |
| 5 | 6 | 7 | 8 | 9 | 10 | 11 |
| 12 | 13 | 14 | 15 | 16 | 17 | 18 |
| 19 | 20 | 21 | 22 | 23 | 24 | 25 |
| 26 | 27 | 28 | 29 | 30 | | |

Youth Led Mass – 5:00P

4

Youth Group – 10:15a

5, 19

Youth Praise and Worship – 1:30P

4, 12, 19, 26

Youth Online Bible Study – 6:30P

6, 13, 20, 27

MS Girls Bible study – 6:30P

10*

extra Hour – 6:00pm

1, 8, 15, 29

DECEMBER

| SU | M | TU | W | Th | F | Sa |
|----|----|----|----|----|----|----|
| | | | | | 1 | 2 |
| 3 | 4 | 5 | 6 | 7 | 8 | 9 |
| 10 | 11 | 12 | 13 | 14 | 15 | 16 |
| 17 | 18 | 19 | 20 | 21 | 22 | 23 |
| 24 | 25 | 26 | 27 | 28 | 29 | 30 |
| 31 | | | | | | |

Youth Led Mass – 5:00P

2

Youth group – 10:15a

3, 10

Youth Praise and Worship – 1:30P

2, 10, 17

Youth Online Bible Study – 6:30P

4, 11

MS Girls Bible study – 6:30P

8

extra Hour – 6:00pm

Confirmation DEADLINES & REMINDERS

Confirmation Class – 6:00P

Oct. 10, Nov. 14, Dec. 12

Baptismal Certificate Due – Oct. 15

Confirmation Info Due – Nov. 5

Letter to Fr. Vincent – Nov. 19

Rite of Enrollment – Dec. 2

save the Date

Youth Ministry Kick-off – Sep. 2

MS Youth Lock-in – Oct. 14-15

Trunk-or-Treat – Oct. 27

NCYC – Nov. 20-22

Advent Wreath Making – Dec. 2

Living Nativity – Dec. 15 & 16

CONNECT WITH US

Religious Education Department

(808) 772-5608

Parish Office

(808) 262-8317

FB: St. John Vianney Parish, Kailua –

Religious Education

IG: @808sjv

Website: www.saintjohnvianneyhawaii.org

ST. JOHN VIANNEY PARISH RELIGIOUS EDUCATION 2023-2024 CALENDAR

SEPTEMBER '23

| Su | M | T | W | Th | F | Sa |
|----|----|----|----|----|----|----|
| | | | | | 1 | 2 |
| 3 | 4 | 5 | 6 | 7 | 8 | 9 |
| 10 | 11 | 12 | 13 | 14 | 15 | 16 |
| 17 | 18 | 19 | 20 | 21 | 22 | 23 |
| 24 | 25 | 26 | 27 | 28 | 29 | 30 |

- 2 5:00pm - Youth Led Mass
- 10 First Day of Classes
10:30am - RE Parent Orientation
- 17 **Catechetical Sunday**
10 :30am - CGS Parents' Session
- 19 6:30pm - FRCE Parent's Orientation (Virtual)
- 22 6:30pm - Girls' Bible Study
- 26 6 :30pm Confirmation Parent's Orientation (Virtual)

OCTOBER '23

| Su | M | T | W | Th | F | Sa |
|----|----|----|----|----|----|----|
| 1 | 2 | 3 | 4 | 5 | 6 | 7 |
| 8 | 9 | 10 | 11 | 12 | 13 | 14 |
| 15 | 16 | 17 | 18 | 19 | 20 | 21 |
| 22 | 23 | 24 | 25 | 26 | 27 | 28 |
| 29 | 30 | 31 | | | | |

- 3 6:00pm - Power and Grace – Sacramental Parent's Session
- 7 5:00pm - Youth Led Mass
6:00pm – Family Faith Formation
- 8 NO CLASS – Fall Break
- 10 6:00pm - Confirmation Class
- 15 **Deadline for Sacramental/New Students to Submit Baptismal Cert.**
- 20 6:30pm - Girls' Bible Study
- 27 6:00pm - Parish Trunk-or-Treat

NOVEMBER '23

| Su | M | T | W | Th | F | Sa |
|----|----|----|----|----|----|----|
| | | | 1 | 2 | 3 | 4 |
| 5 | 6 | 7 | 8 | 9 | 10 | 11 |
| 12 | 13 | 14 | 15 | 16 | 17 | 18 |
| 19 | 20 | 21 | 22 | 23 | 24 | 25 |
| 26 | 27 | 28 | 29 | 30 | | |

- 1 **All Saints Day**
- 4 5:00pm - Youth Led Mass
- 5 **Deadline to Submit Confirmation Info/Registration**
- 7 Power and Grace – Sacramental Parent's Session
- 14 6:00pm - Confirmation Class
- 17 6:30pm - Girls' Bible Study
- 18 9:00am - FRCE - First Reconciliation Retreat
- 19 10:30am - CGS Parent's Session
Deadline for Sacramental Students to Submit Letter to Fr. Vincent
- 26 NO CLASS – Thanksgiving Break
Christ the King

DECEMBER '23

| Su | M | T | W | Th | F | Sa |
|----|----|----|----|----|----|----|
| | | | | | 1 | 2 |
| 3 | 4 | 5 | 6 | 7 | 8 | 9 |
| 10 | 11 | 12 | 13 | 14 | 15 | 16 |
| 17 | 18 | 19 | 20 | 21 | 22 | 23 |
| 24 | 25 | 26 | 27 | 28 | 29 | 30 |
| 31 | | | | | | |

- 2 5pm - Youth Led Mass
Confirmation Rite of Enrollment
6:00pm - Advent Wreath Making
- 3 **First Sunday of Advent**
- 5 6:00pm - Power and Grace – Sacramental Parent's Session
- 8 6:30pm - Girls' Bible Study
Feast of the Immaculate Conception (Holy Day of Obligation)
- 9 10am - First Reconciliation
- 12 6:00pm - Confirmation Class
- 15 & 16 Living Nativity
- 17 NO CLASS – Christmas Break
- 24 NO CLASS – Christmas Break
- 25 **Christmas**
- 31 NO CLASS – Christmas Break

ST. JOHN VIANNEY PARISH CATECHETICAL PROGRAMS

CHILDREN'S LITURGY OF THE WORD

(Grades PreK – 2)

During 9am Mass, Parish Lanai

CATECHESIS OF THE GOOD SHEPHERD - LEVELS 1 – 3

(Grades PreK – 5)

10:15 – 11:45am, Parish Basement

YOUTH GROUP

(Grades 6 – 12)

Every other Sunday

10:15 – 11:45am, Parish Boardroom/Lounge

| <p style="text-align: center;">JANUARY '24</p> <table border="1"> <thead> <tr> <th>Su</th> <th>M</th> <th>T</th> <th>W</th> <th>Th</th> <th>F</th> <th>Sa</th> </tr> </thead> <tbody> <tr> <td></td> <td>1</td> <td>2</td> <td>3</td> <td>4</td> <td>5</td> <td>6</td> </tr> <tr> <td>7</td> <td>8</td> <td>9</td> <td>10</td> <td>11</td> <td>12</td> <td>13</td> </tr> <tr> <td>14</td> <td>15</td> <td>16</td> <td>17</td> <td>18</td> <td>19</td> <td>20</td> </tr> <tr> <td>21</td> <td>22</td> <td>23</td> <td>24</td> <td>25</td> <td>26</td> <td>27</td> </tr> <tr> <td>28</td> <td>29</td> <td>30</td> <td>31</td> <td></td> <td></td> <td></td> </tr> </tbody> </table> | Su | M | T | W | Th | F | Sa | | 1 | 2 | 3 | 4 | 5 | 6 | 7 | 8 | 9 | 10 | 11 | 12 | 13 | 14 | 15 | 16 | 17 | 18 | 19 | 20 | 21 | 22 | 23 | 24 | 25 | 26 | 27 | 28 | 29 | 30 | 31 | | | | <p>6 5:00pm – Youth Led Mass 7 <i>Epiphany of the Lord</i> 9 6:00pm - Confirmation Class 21 10:30am - Confirmation Sponsor Meeting 26 6:30pm - Girls' Bible Study 28 NO CLASS – Breakfast with the Bishop</p> | | | | | | | |
|---|----|----|----|----|----|----|----|--|---|---|---|---|---|---|---|---|---|----|----|----|----|----|----|----|----|----|----|----|----|----|----|----|----|----|----|----|----|----|----|----|----|----|--|--|--|--|--|--|--|---|
| Su | M | T | W | Th | F | Sa | | | | | | | | | | | | | | | | | | | | | | | | | | | | | | | | | | | | | | | | | | | | |
| | 1 | 2 | 3 | 4 | 5 | 6 | | | | | | | | | | | | | | | | | | | | | | | | | | | | | | | | | | | | | | | | | | | | |
| 7 | 8 | 9 | 10 | 11 | 12 | 13 | | | | | | | | | | | | | | | | | | | | | | | | | | | | | | | | | | | | | | | | | | | | |
| 14 | 15 | 16 | 17 | 18 | 19 | 20 | | | | | | | | | | | | | | | | | | | | | | | | | | | | | | | | | | | | | | | | | | | | |
| 21 | 22 | 23 | 24 | 25 | 26 | 27 | | | | | | | | | | | | | | | | | | | | | | | | | | | | | | | | | | | | | | | | | | | | |
| 28 | 29 | 30 | 31 | | | | | | | | | | | | | | | | | | | | | | | | | | | | | | | | | | | | | | | | | | | | | | | |
| <p style="text-align: center;">FEBRUARY '24</p> <table border="1"> <thead> <tr> <th>Su</th> <th>M</th> <th>T</th> <th>W</th> <th>Th</th> <th>F</th> <th>Sa</th> </tr> </thead> <tbody> <tr> <td></td> <td></td> <td></td> <td></td> <td>1</td> <td>2</td> <td>3</td> </tr> <tr> <td>4</td> <td>5</td> <td>6</td> <td>7</td> <td>8</td> <td>9</td> <td>10</td> </tr> <tr> <td>11</td> <td>12</td> <td>13</td> <td>14</td> <td>15</td> <td>16</td> <td>17</td> </tr> <tr> <td>18</td> <td>19</td> <td>20</td> <td>21</td> <td>22</td> <td>23</td> <td>24</td> </tr> <tr> <td>25</td> <td>26</td> <td>27</td> <td>28</td> <td>29</td> <td></td> <td></td> </tr> </tbody> </table> | Su | M | T | W | Th | F | Sa | | | | | 1 | 2 | 3 | 4 | 5 | 6 | 7 | 8 | 9 | 10 | 11 | 12 | 13 | 14 | 15 | 16 | 17 | 18 | 19 | 20 | 21 | 22 | 23 | 24 | 25 | 26 | 27 | 28 | 29 | | | <p>3 5pm - Youth Led Mass 6 6:00pm - Power and Grace – Sacramental Parent's Session 11 10:30am - CGS Parent's Session 13 6:00pm - Confirmation Class 14 <i>Ash Wednesday</i> 16 7:00pm – Stations of the Cross 17 9:00am - Confirmation Candidate and Sponsor Day 18 NO CLASS – President's Day <i>First Sunday of Lent</i> 23 6:30pm - Girls' Bible Study 7:00pm – Stations of the Cross</p> | | | | | | | |
| Su | M | T | W | Th | F | Sa | | | | | | | | | | | | | | | | | | | | | | | | | | | | | | | | | | | | | | | | | | | | |
| | | | | 1 | 2 | 3 | | | | | | | | | | | | | | | | | | | | | | | | | | | | | | | | | | | | | | | | | | | | |
| 4 | 5 | 6 | 7 | 8 | 9 | 10 | | | | | | | | | | | | | | | | | | | | | | | | | | | | | | | | | | | | | | | | | | | | |
| 11 | 12 | 13 | 14 | 15 | 16 | 17 | | | | | | | | | | | | | | | | | | | | | | | | | | | | | | | | | | | | | | | | | | | | |
| 18 | 19 | 20 | 21 | 22 | 23 | 24 | | | | | | | | | | | | | | | | | | | | | | | | | | | | | | | | | | | | | | | | | | | | |
| 25 | 26 | 27 | 28 | 29 | | | | | | | | | | | | | | | | | | | | | | | | | | | | | | | | | | | | | | | | | | | | | | |
| <p style="text-align: center;">MARCH '24</p> <table border="1"> <thead> <tr> <th>Su</th> <th>M</th> <th>T</th> <th>W</th> <th>Th</th> <th>F</th> <th>Sa</th> </tr> </thead> <tbody> <tr> <td></td> <td></td> <td></td> <td></td> <td></td> <td>1</td> <td>2</td> </tr> <tr> <td>3</td> <td>4</td> <td>5</td> <td>6</td> <td>7</td> <td>8</td> <td>9</td> </tr> <tr> <td>10</td> <td>11</td> <td>12</td> <td>13</td> <td>14</td> <td>15</td> <td>16</td> </tr> <tr> <td>17</td> <td>18</td> <td>19</td> <td>20</td> <td>21</td> <td>22</td> <td>23</td> </tr> <tr> <td>24</td> <td>25</td> <td>26</td> <td>27</td> <td>28</td> <td>29</td> <td>30</td> </tr> <tr> <td>31</td> <td></td> <td></td> <td></td> <td></td> <td></td> <td></td> </tr> </tbody> </table> | Su | M | T | W | Th | F | Sa | | | | | | 1 | 2 | 3 | 4 | 5 | 6 | 7 | 8 | 9 | 10 | 11 | 12 | 13 | 14 | 15 | 16 | 17 | 18 | 19 | 20 | 21 | 22 | 23 | 24 | 25 | 26 | 27 | 28 | 29 | 30 | 31 | | | | | | | <p>1 7:00pm – Stations of the Cross 2 5:00pm – Youth Led Mass 5 6:00pm - Power and Grace – Sacramental Parent's Session 8 7:00pm – Stations of the Cross 15 7:00pm – Stations of the Cross 17 NO CLASS – Spring Break 22 6:30pm - Girls' Bible Study 7:00pm – Stations of the Cross 23 9:00am - First Eucharist Retreat 29 <i>Good Friday</i> 31 NO CLASS – Easter</p> |
| Su | M | T | W | Th | F | Sa | | | | | | | | | | | | | | | | | | | | | | | | | | | | | | | | | | | | | | | | | | | | |
| | | | | | 1 | 2 | | | | | | | | | | | | | | | | | | | | | | | | | | | | | | | | | | | | | | | | | | | | |
| 3 | 4 | 5 | 6 | 7 | 8 | 9 | | | | | | | | | | | | | | | | | | | | | | | | | | | | | | | | | | | | | | | | | | | | |
| 10 | 11 | 12 | 13 | 14 | 15 | 16 | | | | | | | | | | | | | | | | | | | | | | | | | | | | | | | | | | | | | | | | | | | | |
| 17 | 18 | 19 | 20 | 21 | 22 | 23 | | | | | | | | | | | | | | | | | | | | | | | | | | | | | | | | | | | | | | | | | | | | |
| 24 | 25 | 26 | 27 | 28 | 29 | 30 | | | | | | | | | | | | | | | | | | | | | | | | | | | | | | | | | | | | | | | | | | | | |
| 31 | | | | | | | | | | | | | | | | | | | | | | | | | | | | | | | | | | | | | | | | | | | | | | | | | | |
| <p style="text-align: center;">APRIL '24</p> <table border="1"> <thead> <tr> <th>Su</th> <th>M</th> <th>T</th> <th>W</th> <th>Th</th> <th>F</th> <th>Sa</th> </tr> </thead> <tbody> <tr> <td></td> <td>1</td> <td>2</td> <td>3</td> <td>4</td> <td>5</td> <td>6</td> </tr> <tr> <td>7</td> <td>8</td> <td>9</td> <td>10</td> <td>11</td> <td>12</td> <td>13</td> </tr> <tr> <td>14</td> <td>15</td> <td>16</td> <td>17</td> <td>18</td> <td>19</td> <td>20</td> </tr> <tr> <td>21</td> <td>22</td> <td>23</td> <td>24</td> <td>25</td> <td>26</td> <td>27</td> </tr> <tr> <td>28</td> <td>29</td> <td>30</td> <td></td> <td></td> <td></td> <td></td> </tr> </tbody> </table> | Su | M | T | W | Th | F | Sa | | 1 | 2 | 3 | 4 | 5 | 6 | 7 | 8 | 9 | 10 | 11 | 12 | 13 | 14 | 15 | 16 | 17 | 18 | 19 | 20 | 21 | 22 | 23 | 24 | 25 | 26 | 27 | 28 | 29 | 30 | | | | | <p>6 5:00pm – Youth Led Mass 6:00pm – Family Faith Formation 7 10:30am - CGS Parent's Session 9 6:00pm - Confirmation Class 13 9:00am - Confirmation Retreat (Grades 5 and below) Confirmation Retreat (Grades 6 and above) (subject to change) 20 10:00am - Confirmation/FRCE Interviews 7 10:30am - CGS Parent's Session 26 6:30pm - Girls' Bible Study</p> | | | | | | | |
| Su | M | T | W | Th | F | Sa | | | | | | | | | | | | | | | | | | | | | | | | | | | | | | | | | | | | | | | | | | | | |
| | 1 | 2 | 3 | 4 | 5 | 6 | | | | | | | | | | | | | | | | | | | | | | | | | | | | | | | | | | | | | | | | | | | | |
| 7 | 8 | 9 | 10 | 11 | 12 | 13 | | | | | | | | | | | | | | | | | | | | | | | | | | | | | | | | | | | | | | | | | | | | |
| 14 | 15 | 16 | 17 | 18 | 19 | 20 | | | | | | | | | | | | | | | | | | | | | | | | | | | | | | | | | | | | | | | | | | | | |
| 21 | 22 | 23 | 24 | 25 | 26 | 27 | | | | | | | | | | | | | | | | | | | | | | | | | | | | | | | | | | | | | | | | | | | | |
| 28 | 29 | 30 | | | | | | | | | | | | | | | | | | | | | | | | | | | | | | | | | | | | | | | | | | | | | | | | |
| <p style="text-align: center;">MAY '24</p> <table border="1"> <thead> <tr> <th>Su</th> <th>M</th> <th>T</th> <th>W</th> <th>Th</th> <th>F</th> <th>Sa</th> </tr> </thead> <tbody> <tr> <td></td> <td></td> <td></td> <td>1</td> <td>2</td> <td>3</td> <td>4</td> </tr> <tr> <td>5</td> <td>6</td> <td>7</td> <td>8</td> <td>9</td> <td>10</td> <td>11</td> </tr> <tr> <td>12</td> <td>13</td> <td>14</td> <td>15</td> <td>16</td> <td>17</td> <td>18</td> </tr> <tr> <td>19</td> <td>20</td> <td>21</td> <td>22</td> <td>23</td> <td>24</td> <td>25</td> </tr> <tr> <td>26</td> <td>27</td> <td>28</td> <td>29</td> <td>30</td> <td>31</td> <td></td> </tr> </tbody> </table> | Su | M | T | W | Th | F | Sa | | | | 1 | 2 | 3 | 4 | 5 | 6 | 7 | 8 | 9 | 10 | 11 | 12 | 13 | 14 | 15 | 16 | 17 | 18 | 19 | 20 | 21 | 22 | 23 | 24 | 25 | 26 | 27 | 28 | 29 | 30 | 31 | | <p>4 5:00pm – Youth Led Mass 9 <i>Feast of the Ascension of the Lord</i> 12 NO CLASS 17 6:30pm - Girls' Bible Study 19 Last Day of CGS/YG <i>Pentecost</i> 10:20am ** 10:00am – First Eucharist/Confirmation Rehearsal ** 5:00pm – First Eucharist/Confirmation</p> | | | | | | | |
| Su | M | T | W | Th | F | Sa | | | | | | | | | | | | | | | | | | | | | | | | | | | | | | | | | | | | | | | | | | | | |
| | | | 1 | 2 | 3 | 4 | | | | | | | | | | | | | | | | | | | | | | | | | | | | | | | | | | | | | | | | | | | | |
| 5 | 6 | 7 | 8 | 9 | 10 | 11 | | | | | | | | | | | | | | | | | | | | | | | | | | | | | | | | | | | | | | | | | | | | |
| 12 | 13 | 14 | 15 | 16 | 17 | 18 | | | | | | | | | | | | | | | | | | | | | | | | | | | | | | | | | | | | | | | | | | | | |
| 19 | 20 | 21 | 22 | 23 | 24 | 25 | | | | | | | | | | | | | | | | | | | | | | | | | | | | | | | | | | | | | | | | | | | | |
| 26 | 27 | 28 | 29 | 30 | 31 | | | | | | | | | | | | | | | | | | | | | | | | | | | | | | | | | | | | | | | | | | | | | |

Religious Education Department

(808) 772-5608



Check us out on Facebook

St. John Vianney Parish, Kailua –
Religious Education

Website

<http://www.saintjohnvianneyhawaii.org/>



Check us out on Instagram

@808sjv

Join Us For

PARENTS

BIBLE STUDY

**A Biblical
Walk Through
the Mass**

**A Bible Study program for a parent's busy life!
Join us while your child is in class on this 5-week journey
with A Biblical Walk Through the Mass.**

**For more information, visit saintjohnvianneyhawaii.org
or call (808) 772-5608**

GIVE ALOHA

TO SUPPORT

ST JOHN VIANNEY SCHOOL

1

SHOP AT ANY
FOODLAND, SACK N
SAVE AND FOODLAND
FARMS STORES
THROUGHOUT THE
MONTH OF SEPTEMBER

2

SHOW YOUR
MAIKA'I CARD AT
CHECKOUT

3

USE CODE **79116**
TO DONATE TO
ST JOHN VIANNEY
SCHOOL

Your contribution of any size will help provide needed resources to the school.

A percentage of the donations (up to \$249) made by customers enrolled in the Maika'i program will be matched by Foodland and the Western Union Foundation. Donations can be made without a Maika'i card, but these donations will not be matched.



give aloha

Foodland's Annual Community Matching Gifts Program

For more information please visit:

www.givealoha.foodland.com/General/ProgramInfo

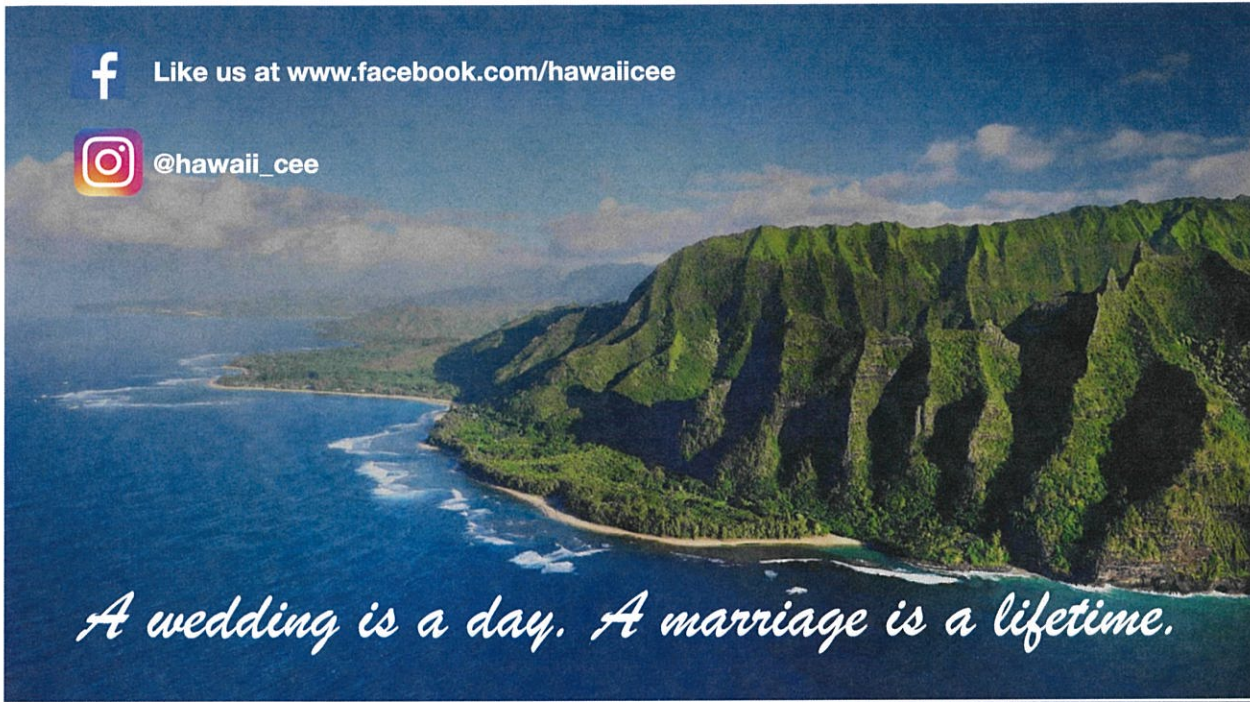




Like us at www.facebook.com/hawaiicee



@hawaii_cee



A wedding is a day. A marriage is a lifetime.

State Coordinators

Dcn. Chris & Dawn Ribucan
hawaii@engagedencounter.com
(808) 446-9411 or 707-0390

Registration Contact

Dcn. Rey & Roxanne Torres
(940) 447-5347
hawaiiregistration@engagedencounter.com



Register online!

hawaii.engagedencounter.com

Neighbor Island Representatives

Hawaii Island

Rose Nunogawa
(808) 935-8464
jrnunogawa@gmail.com

Maui

Dcn. Chris & Dawn Ribucan
dawnandchris5121@gmail.com
(808) 446-9411 or 707-0390

Kauai

Dcn. Dave & Anne Kane
(808) 245-2432
dkane@rcchawaii.org

Molokai

Dcn. Mike & Leoda Shizuma
(808) 646-0269

Lanai

Dcn. Henry & Divina Costales
(808)559-9509 or 559-0007
hccostales@rcchawaii.org or divines135@gmail.com



Hawaii Catholic Engaged Encounter 2023



Circle which weekend
you would like to attend:

Oahu

St. Stephen Diocesan Center
6301 Pali Highway, Kaneohe

January 27–29, 2023

March 17–19, 2023

May 26–28, 2023

July 28–30, 2023

September 15–17, 2023

November 17–19, 2023

Hawaii Island

St. Joseph Church Rectory, Hilo
February 25–26, 2023

St. Michael Parish Center, Kailua-Kona
September 16–17, 2023

Maui

St. Anthony School Media Center, Wailuku

April 22–23, 2023

October 7–8, 2023

Kauai

Immaculate Conception Church, Lihue

April 22–23, 2023

October 28–29, 2023

Lanai

Sacred Hearts Church, Lanai City

July 15–16, 2023

Couple Information

His Name: _____

His Address: _____

His Email: _____

His Phone: _____

His Religion: _____

Her Name: _____

Her Address: _____

Her Email: _____

Her Phone: _____

Her Religion: _____

Send registration confirmation to: Groom / Bride

Are you already civilly married? Yes / No

Are you willing to assist with music for the weekend? Yes / No

Please list any special needs (for example, special diet, disability consideration, or medical issues):

Wedding Information

1. Catholic Church* where the wedding is scheduled to take place:

** Can be a non-Catholic Church only if both the bride and groom are not baptized Catholic. A marriage involving a Catholic outside of the Catholic Church is invalid. Please contact your parish to arrange for a Catholic wedding before registering.*

2. Priest or deacon that you have met with already to begin marriage preparation:

3. Parish of priest or deacon (if different from church where wedding will take place):

4. Wedding date: _____

Use this form if paying by check

Cost: \$350.00 Oahu (includes housing)
\$300.00 Neighbor Islands (no housing)

Make check payable to:
Hawaii Catholic Engaged Encounter

Mail payment and this form to:

Richard & Alesia Macugay

299 Mokapu St.

Kahului, HI 96732

For on-line registration, go to:

hawaii.engagedencounter.com

Credit & debit card payment accepted online