

# **ST. JOHN VIANNEY PARISH**

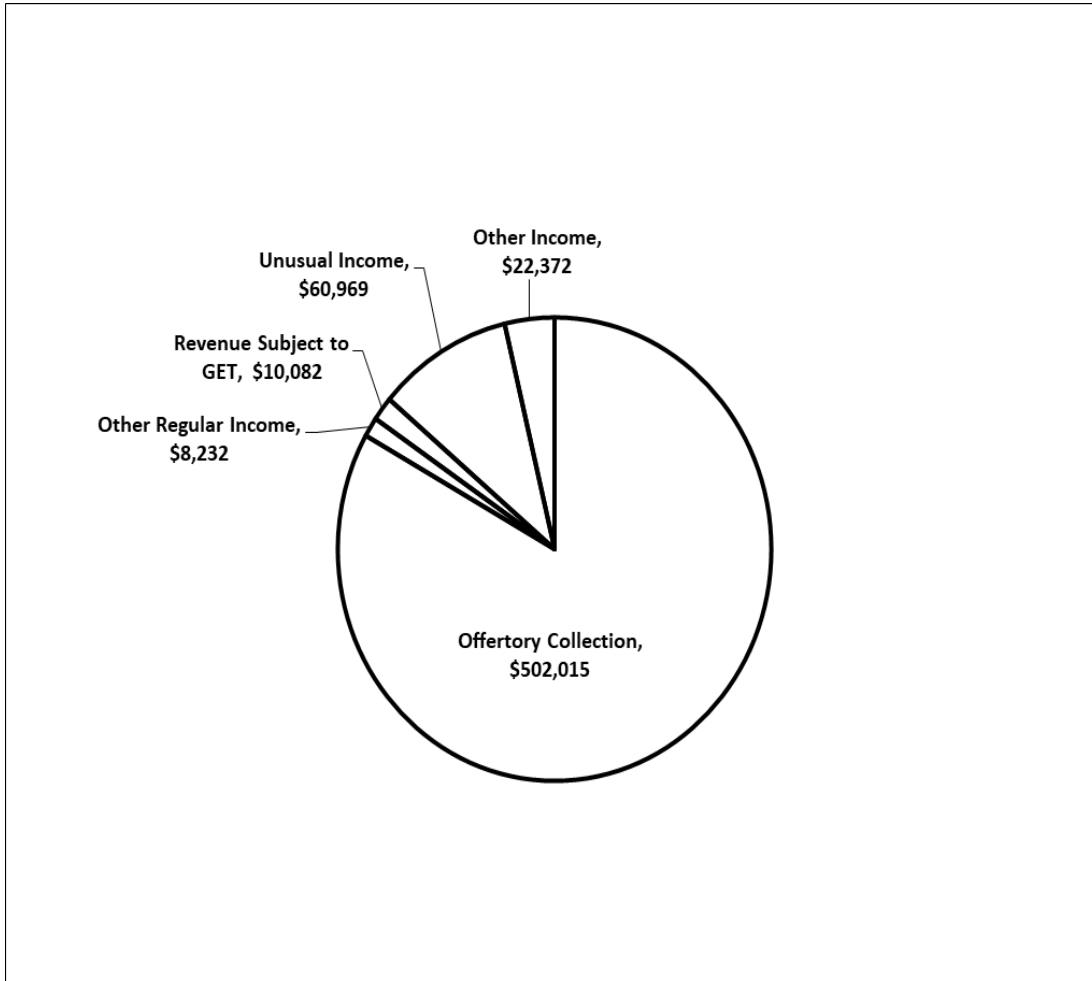


## **YEAR END FINANCIAL REPORT JULY 1, 2019 – JUNE 30, 2020**

920 Keolu Drive ♦ KAILUA, Hawaii 96734  
PHONE (808) 263-8317 ♦ FAX (808) 772-5634

**TOTAL RECEIPTS: JULY 1, 2019 – JUNE 30, 2020**

**\$603,670**



**REVENUE DESCRIPTION:**

**Offertory Collection:** Sunday envelope, Sunday loose collections and Sunday on-line giving. Also includes Holy Day collections (Immaculate Conception, Christmas, Easter) and other feast days (Assumption of Mary, Ash Wednesday, 1<sup>st</sup> Offering, Ascension of the Lord, New Year's, Thanksgiving, All Saint's and All Souls Day).

**Other Regular Income:** Offerings for Weddings, Baptisms, Funerals, Blessings and Mass Intentions.

**Revenue Subject to GET:** General Excise Tax income from fundraising activities and rent (use of facilities).

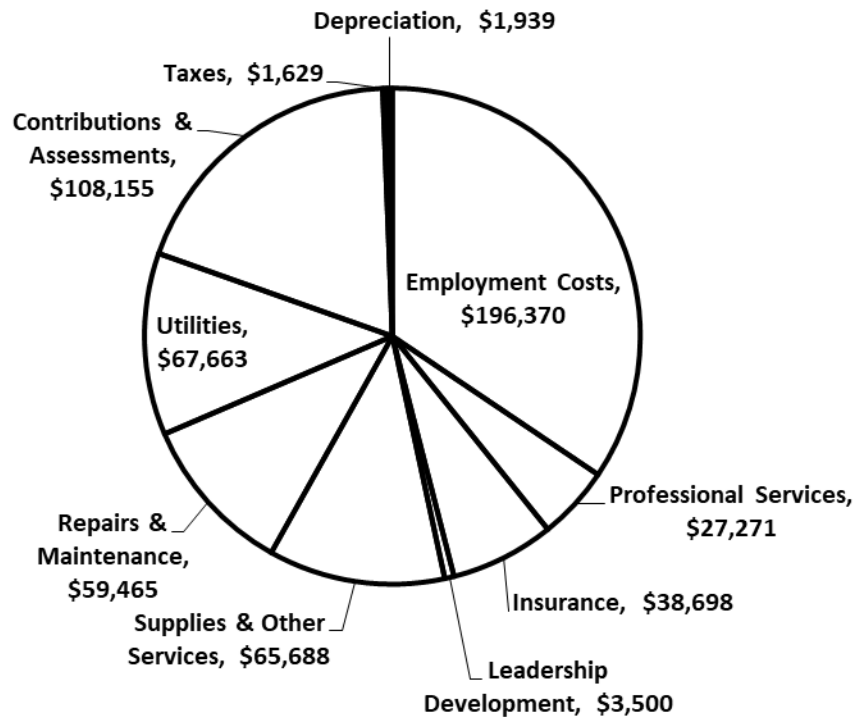
**Unusual Income:** Unrestricted donations, donations for church flowers and hospitality Sunday.

**Other Income:** Income from Savings account interest, PPP (Paycheck Protection Program) Loan (US Federal Government Coronavirus Aid/Relief), Religious Education Fees, donations for the Catholic Herald, and donations for the Sodality club.

**Temporarily Restricted Assets:** Restricted funds from donations strictly for repairs/maintenance, debt/major repairs, music ministry, appeal drive and office equipment.

## TOTAL EXPENDITURES: JULY 1, 2019 – JUNE 30, 2020

**\$570,378**



### EXPENDITURES DESCRIPTION:

**Employment Costs:** Salaries/Wages, Benefits and Employer Taxes.

**Professional Services:** Expense for Legal, Payroll and Audit Fees. Computer/IT Fees, and Book Keeping Services.

**Insurance:** Property and Liability Insurance.

**Leadership Development:** Expense for Safe Environment and Workshop/Retreat Fees. Priest Convocation and Deacon Formation.

**Supplies & Other Services:** Costs for Office, Liturgical, and Janitorial Supplies. Business, Office Equipment, Hospitality/Appreciation and Committee Expenses. Candles for resale, Hawaii Catholic Herald Subscription, Religious Education and Sacramental Preparation Costs. Subscriptions and Permit/License Fees.

**Repairs and Maintenance:** Expense for Buildings/Facilities, Rectory, and Grounds.

**Utilities:** Costs for Alarm/Surveillance, Telephone, Internet Service, Cable, Electric, and Water/Sewer.

**Contributions and Assessments:** Parish support to the Diocese. Charitable Contribution to Others, Social Ministry/Outreach and School Subsidy.

**Taxes:** General Excise and Property Tax.

**Depreciation:** for the Parish Center Office split air-conditioner equipment .

330 - Saint John Vianney Church, Kailua  
Statement of Activities vs Budget

7/1/2019 - 6/30/2020

		Actual	Budget	Variance (\$)	Variance (%)
<b>Changes in Unrestricted Net Assets</b>					
<b>Income</b>					
40000	OFFERTORY COLLECTION	502,015	524,400	(22,385)	-4%
42000	OTHER REGULAR INCOME	8,232	9,850	(1,618)	-16%
45000	REVENUE SUBJECT TO GET	10,082	6,000	4,082	68%
47000	UNUSUAL (NON-SCHEDULED) INCOME	60,968	37,350	23,618	63%
49100	NET ASSETS RELEASED- OPERATIONS	-	26,825	(26,825)	-100%
47900	OTHER INCOME	22,372	5,650	16,722	296%
	<b>Total Income</b>	<b>603,670</b>	<b>610,075</b>	<b>(6,405)</b>	<b>-1%</b>
<b>Expense</b>					
50000	EMPLOYMENT COSTS	196,370	228,305	(31,935)	-14%
51000	PROFESSIONAL SERVICES	27,271	22,450	4,821	21%
51500	INSURANCE	38,698	32,700	5,998	18%
51700	LEADERSHIP DEVELOPMENT	3,500	12,200	(8,700)	-71%
52000	SUPPLIES AND OTHER SERVICES	65,687	75,225	(9,538)	-13%
53000	REPAIRS AND MAINTENANCE	59,465	52,700	6,765	13%
54000	UTILITIES	67,663	58,100	9,563	16%
55000	CONTRIBUTIONS AND ASSESSMENTS	108,155	135,852	(27,697)	-20%
57000	TAXES	1,629	1,100	529	48%
58000	DEPRECIATION	1,939	-	1,939	0%
	<b>Total Expense</b>	<b>570,378</b>	<b>618,632</b>	<b>(48,254)</b>	<b>-8%</b>
	<b>Total Changes in Unrestricted Net Assets</b>	<b>33,292</b>	<b>(8,557)</b>	<b>41,849</b>	<b>489%</b>
<b>Other Income/Expense</b>					
<b>Other Income</b>					
70000	TEMPORARILY RESTRICTED ASSETS	242,640	197,500	45,140	23%
	<b>Total Other Income</b>	<b>242,640</b>	<b>197,500</b>	<b>45,140</b>	<b>23%</b>
	<b>Total Other Income/Expense</b>	<b>242,640</b>	<b>197,500</b>	<b>45,140</b>	<b>23%</b>
	<b>Total Changes in Net Assets</b>	<b>275,932</b>	<b>188,943</b>	<b>86,989</b>	<b>46%</b>