

September 24, 2023 Twenty-Fifth Sunday in Ordinary Time

Sunday Bulletin

St. John Vianney Catholic Church, Kailua

WWW.SAINTJOHNVIANNEYHAWAII.ORG | SJVKAILUAPARISH@RCCHAWAII.ORG

920 KEOLU DRIVE, KAILUA, HI 96734 | 808-262-8317 | REV. VINCENT VU, PASTOR



Celebrate!

PRIESTHOOD SUNDAY

ANNOUNCEMENTS

Priesthood Sunday honors men who are called to religious vocation as Priests

This Sunday is Priesthood Sunday in the United States of America—an annual opportunity for us to express our thanks for the service of our priests. They are with us at all stages of our life; at baptism, during our school years, when we marry, when we are troubled, when we are blessed, when we are sick, when we are dying, and when we have passed. These men stand *in persona Christi*, a visible presence of our Savior Jesus Christ, at the altars of our church to offer us the Bread of Life, the Eucharist. They listen to our transgressions in confession, and offer the merciful love and forgiveness of our heavenly Father. Let us thank our priests for their presence in our lives by dropping them a note in a card, email or text message just to say “thanks, Father, for being an important part of my life and the life of my family.” Please pray for our priests as well as those who are studying to become our future priests. They depend upon our prayers and spiritual support and our diocese needs good, holy, wholesome, and joyful priests to continue the ministry that the Lord entrusted to His Church.

St. Vincent de Paul never wrote a book about his spiritual teachings.

We find the living voice of the saint in his letters and conferences in which he trained his followers for the mission of service to the poor. The fundamental sources of his teaching are the Gospel and life. He wanted his followers to put the whole of the Gospel into the whole of their lives, which is why all that Vincent says to us has the simplicity of our everyday life and the penetrating strength of the Word of God. A favorite saying of his still used today by Vincentians worldwide is "Do the good placed in front of you." His feast day is September 27th and his follower Blessed Fredrick Ozanam's is September 9th. Fredrick was a young college student when a fellow student challenged him to put into practice what his Catholic Church taught. He enlisted the help of the Daughters of Charity founded by St. Vincent de Paul and St. Louise de Marillac. Thus began the St. Vincent de Paul Society in 1833.

Our Windward Oahu Conference, based out of St. John Vianney, serves the entire state of Hawaii. Therefore, we answer all calls for aid and help as best we can. What do we need? More members who desire to help those in need and be enriched spiritually. Donations—the money comes in and goes out—that's the Vincentian Way. Since October 1, 2022, our Conference provided \$50,637 of aid to 93 neighbors in need; \$27,625 in rental assistance, \$14,289 in utilities, \$6,518 in food, and \$2,205 household items or services.

Prayers for Healing

- | | |
|----------------------|-------------------|
| Ruth Alves | Kailey Jong-Perez |
| Anna Asinsin | Annette Lewis |
| Edward Balderston | Emily Lim |
| Jim Balderston | Kasey Lopes |
| Terry Barnaby | Gloria Malabet |
| Hayes Beissel | Sandy McAulton |
| Clark Bernales | Gloria Medeiros |
| Robert Bernales | Juan Mendiola |
| Bimbo Family | Ann Meyer |
| Avarose Marie Braga | Jack Meyer |
| Malia Braga | Beverly Mink |
| Michelle Brown | Bobby Mink |
| Donovan Caldeira | Audrey Motonaga |
| Sheryl Caldeira | Hope Montalvo |
| Rod Castanha | Mary Odom |
| Carolyn Chong | Cayetana Paras |
| Pat Drury | Marie Perreira |
| Herman Encarnacion | James Reis |
| John Glorioso, Jr | Bill Roman |
| Tom Glorioso | Linda Roman |
| Angeline Goh | Antonio Salcedo |
| Jayla Gomes | Par Salehi |
| Milli Gorecki | Barbara Sladovnik |
| Tim Hudson | Deni Smith |
| Ellen Huntley | Bernardo Soriano |
| Sylvia Ann Pao Kruse | John Sutton |
| Malia Lambertson | Gabrielle Taylor |
| Tony Lambio | Terri Taylor |

Repose of Soul

- +Craig “Liko” Kaaa, Funeral Service held
- +Joan Lee, Funeral Service held
- +Wilhelmina Kealoha, Funeral Service held
- +Francis Tolentino, Funeral Service held
- +Eileen Bourgeois, Funeral Mass on Sep 25 at 10:30 a.m.
- +Rosalie “Elizabeth” Libby, Funeral Mass on Sat, Sep 30 at 11 a.m. (new date)
- +Victoria Castillo, Funeral Svc on Oct 18
- +Kenneth Stevens, Burial on Nov 3
- +Juanita Cardus, Funeral Mass in 2024

Next Sunday’s Readings

- 1st Reading: Ezekiel 18:25-28
- 2nd Reading: Philippians 2:1-11
- Gospel: Matthew 21:28-32

Upcoming Events

- Sun, Sep 24, Priesthood Sunday
Thank you, Fr. Vincent and Fr. Arnold!
- Sat & Sun, Sep 30 & Oct 1, Hospitality Weekend on the Fellowship Lanai after all Masses
- Fri, Oct 6, 9 a.m. Stretch and dance class with Helen Klein in the Parish Lounge
- Sat, Oct 7, 8 a.m. Anointing of the Sick in Mass followed by Eucharistic Adoration of the Blessed Sacrament
- Fri, Oct 13, 6 a.m.-noon, Diocesan Eucharistic Rosary Congress at SJV

Download the music leaflet to sing along during Mass from your smart device.



SCHOOL NEWS

St. John Vianney School provides children with the invaluable opportunity to expand their knowledge, explore their passions, create community, strengthen their sense of self and come to know God all in one place. By incorporating faith into the classroom, we are nurturing the entire child in mind, body, and spirit for a happy, healthy, and balanced life.

Students learn that they have a responsibility to make a difference in the world and to respond to the needs of others because we are all part of God's family. This is the Catholic school difference that encourages students to share and explore Christ's love through kindness and service to their community.

Our goal is to provide the development of a deep sense of faith in our students, the importance of their moral character and to inspire them to a life-long journey of learning. For more information on our curriculum and mission, see our website sjvkailua.org or call the school office at 808-261-4651.



The 8th graders experienced a day in the life at Sacred Hearts Academy and St. Louis School. They visited classrooms, met with students, and were treated like royalty as they learned all about the high schools.



JODY BARNHART WILL BE MISSED

Mrs. Jody Barnhart, a vibrant lady and loved by many, has moved back to her hometown in the mainland to be with family. Jody was a hospitality minister and rosary-making instructor. She and her husband have sent off thousands of handmade rosaries made by the Sodality Rosary group to different countries and Catholic churches in Hawaii. Jody's move puts her closer to her daughter and two granddaughters. The Sodality women gave her a nice going away luncheon where all had a wonderful time! The Thursday Rosary-makers group will continue to meet and make rosaries to be sent around the world.

CATHOLIC FAITH CORNER

A YEAR OF THE EUCHARISTIC REVIVAL

The Catechism on the Eucharist

What is this sacrament called? The Catechism of the Catholic Church No. 1328 - 1332 says: The inexhaustible richness of this sacrament is expressed in the different names we give it. Each name evokes certain aspects of it. It is called:

Eucharist, because it is an action of thanksgiving to God. The Greek words *eucharistein* and *eulogein* recall the Jewish blessings that proclaim - especially during a meal - God's works: creation, redemption, and sanctification.

The Lord's Supper, because of its connection with the supper which the Lord took with his disciples on the eve of his Passion and because it anticipates the wedding feast of the Lamb in the heavenly Jerusalem.

The Breaking of Bread, because Jesus used this rite, part of a Jewish meal, when as master of the table he blessed and distributed the bread, above all at the Last Supper. It is by this action that his disciples will recognize him after his Resurrection, and it is this expression that the first Christians will use to designate their Eucharistic assemblies; by doing so they signified that all who eat the one broken bread, Christ, enter into communion with him and form but one body in him.

Holy Communion, because by this sacrament we unite ourselves to Christ, who makes us sharers in his Body and Blood to form a single body.

Holy Mass (Missa), because the liturgy in which the mystery of salvation is accomplished concludes with the sending forth (missio) of the faithful, so that they may fulfill God's will in their daily lives.



MARIANIST LECTURE SERIES

God's Mechanics: How Scientists and Engineers Make Sense of Religion

Sunday, October 8, 2023 at 4 p.m. at Chaminade University's Mystical Rose Oratory. Brother Guy Consolmagno, S.J. is the Director of the Vatican Observatory and will speak about the connection between science and religion. He is the author of several popular books including *Turn Left at Orion* and *Would you Baptize an Extraterrestrial?*

'OHANA IN CHRIST 2024 APPEAL

Annual Appeal for the Catholic Church in Hawaii

Each day, the Catholic Church in Hawaii shares the Spirit of Christ throughout our 'Ohana of parishes, schools, social agencies, and communities across the Islands. This is all possible thanks to your generous response to our Catholic mission and the call to Witness to Jesus. Beyond the good works at each parish, the annual 'Ohana in Christ appeal helps us respond to the material and spiritual needs of the greater church.

Read Bishop Larry Silva's full letter regarding the annual appeal for the Catholic Church in Hawaii in the online bulletin.

OFFERTORY Our gifts to God to steward the Church

| Week of Sep 9—15, 2023 | Envelopes/Loose | Online Giving | Total | Goal | % of Goal |
|------------------------------|-----------------|---------------|------------|------------|-----------|
| Sunday Offertory | \$3,457.00 | \$2,544.00 | \$6,001.00 | \$8,763.33 | 68.48% |
| Repair and Maintenance | \$472.00 | \$358.00 | \$830.00 | \$1,500.00 | 55.33% |
| Major Repair and Maintenance | \$0.00 | \$215.00 | \$215.00 | \$576.92 | 37.72% |

Give Online



25th Sunday in Ordinary Time

Thank you for placing the leaflets in the re-cycling box after Mass.

GATHERING SONG

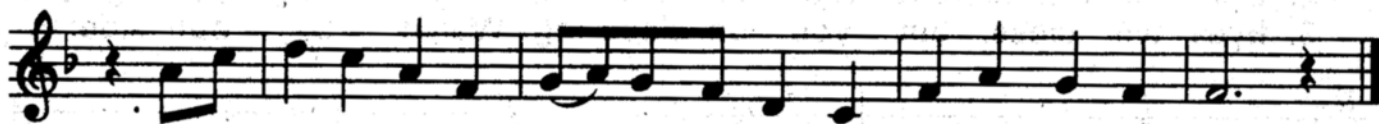
WE BELONG TO YOU

Trevor Thomson

Refrain

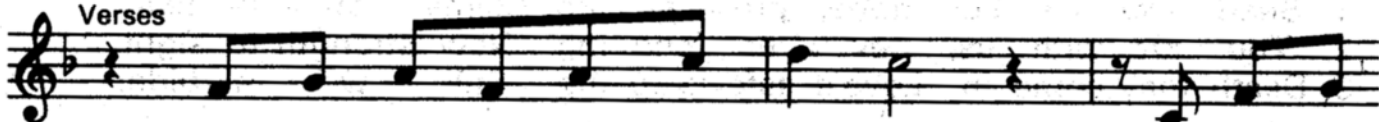


We be-long to you, O Lord of our long-ing, We be-long to you.



In our dai-ly liv-ing, dy - ing and ris-ing We be-long to you.

Verses



- | | |
|---|-------------|
| 1. In the wa - ters of your mer - cy, | 7 When the |
| 2. Filled with gifts and filled with good - ness, | 7 Spir - it |
| 3. When we share the bread you've bro - ken | 7 With the |
| 4. We are called to share your word, Lord, | In all we |



- | | |
|----------------------------|----------------------------|
| 1. old be-comes the new, | Souls u - nit - ed in the |
| 2. breath-ing life in - to | All who seek to find their |
| 3. man - y and the few, | We are blessed and we are |
| 4. say and all we do. | As our jour - ney moves us |



to Refrain

- | | |
|----------------|---|
| 1. mys - t'ry: | } |
| 2. pur - pose: | |
| 3. bro - ken; | |
| 4. on - ward, | |

We be-long to you.

Text © 2006, Victoria Thomson. Music © 2006, Trevor Thomson.
Text and music published by Spirit & Song®, a division of OCP. All rights reserved.
Reprinted with permission under ONE LICENSE, License #A-735407



GLORY TO GOD

after Howard Hughes, SM ICEL Psalter, 1992, arr. R.M. RM 27.4



Glory to God in the highest, | and on earth peace to people of good will. || We praise you, we bless you, we adore you, we glorify you, ||| we give you thanks for your great glory,
Lord God, heavenly King, | O God, almighty Father. || Lord Jesus Christ, ||| Only Begotten Son, Lord God,
Lamb of God, Son of the Father, | you take away the sins of the world, have mercy on us; || you take away the sins of the world, receive our prayer; ||| you are seated at the right hand of the Father, have mercy on us.
For you alone are the Holy One, you alone are the Lord, | you alone are the Most High, Jesus Christ, || with the Holy Spirit, ||| in the glory of God the Father. Amen.

RESPONSORIAL PSALM

Moderate **Psalm 145⁶** *Robert M. Mondoy*

Musical notation for Psalm 145 in G major, 4/4 time. It consists of two lines of music with a treble clef and a key signature of one sharp (F#). The melody is: G4 (quarter), A4 (quarter), B4 (quarter), C5 (quarter), B4-A4 (beamed eighth notes), G4 (quarter), F#4 (quarter), E4 (quarter), D4 (quarter), C4 (half).

To those who call up - on the Lord, the Lord is near,
the Lord is near to those who call.

1. I will bless you day by day, for ever praise your name. Great is the Lord, highly to be praised, so far beyond our reach.
2. Gracious and merciful is the Lord, full of love, slow to anger. The Lord is good in every way, merciful to every creature.
3. The Lord is just in every way, in every deed full of love. The Lord is near to those who call, who cry out from their hearts.

©2005 Mondoy Music. All rights reserved. [133]
Used with permission. Go listen: mondoymusic.com

Gospel Acclamation

Musical notation for Gospel Acclamation in G major, 4/4 time. It consists of a single line of music with a treble clef and a key signature of one sharp (F#). The melody is: G4 (quarter), A4 (quarter), B4 (quarter), C5 (quarter), B4-A4 (beamed eighth notes), G4 (quarter), F#4 (quarter), E4 (quarter), D4 (quarter), C4 (half).

Al-le-lu-ia, al-le - lu - ia! Al-le-lu-ia, al-le - lu - ia!

"Triumphant Cross Mass" ©1998 Robert M. Mondoy www.mondoymusic.com. All rights reserved.

PREPARATION OF THE GIFTS **There's A Wideness in God's Mercy** (Leo: *Nā Wahi Hohonu*) notation: Hymnal 265

1. There's a wideness in God's mercy, like the wideness of the sea; There's a kindness in his justice which is more than liberty. There is plentiful redemption in the blood that has been shed; There is joy for all the members in the sorrows of the head.
2. There is welcome for the sinner and the promised grace made good. There is mercy with the Savior; there is healing in his blood. There is grace enough for thousands of new worlds as great as this. There is room for fresh creations in that upper home of bliss.
3. For the love of God is broader than the measures of the mind; and the heart of the Eternal is most wonderfully kind. If our love were but more simple, we should take him at his word, And our lives would be all sunshine in the kindness of the Lord.
4. Troubled souls, why will you scatter like a crowd of frightened sheep? Foolish hearts why will you wander from a love so true and deep? There is welcome for the sinner and more graces for the good; There is mercy with the Savior, there is healing in his blood.

Hua 'ōlelo: Frederick William Faber (1814-1863) in his *Oratory Hymns*, 1854.

Leo: *Laulaha*, an original melody by Robert M. Mondoy homage to 19th c. Hawaiian composers.. All rights reserved. Used with permission.

EUCCHARISTIC ACCLAMATIONS

Segunda Missa Bossa Nova
Preface Dialogue

RM 127

The Lord be with you. And with your spir - it. Lift up your hearts. We lift them up to the Lord. Let us give thanks to the Lord It is right and just.

©2023 Robert M. Mondoy. www.mondoymusic.com. All rights reserved. Used with permission.

Segunda Missa Bossa Nova
Holy Holy Holy

RM 227

Ho - ly, ho - ly, ho - ly Lord, God of hosts. Heav - en and earth are full of your glo - ry, your glo - ry. Ho - san - na in the high - est, ho - san - na in the high - est, ho - san - na in the high - est. Bles - sed is he who comes in the name of the Lord. Ho - san - na in the high - est, ho - san - na in the high - est, ho - san - na in the high - est.

©2023 Robert M. Mondoy. www.mondoymusic.com. All rights reserved. Used with permission.

Segunda Missa Bossa Nova
Memorial Acclamation

RM 327

The mys - ter - y of faith. When we eat this bread and drink this cup, and drink this cup, we pro - claim your death, O Lord, we pro - claim your death, O Lord un - til you come a - gain.

©2023 Robert M. Mondoy. www.mondoymusic.com. All rights reserved. Used with permission.

Segunda Missa Bossa Nova
Great Amen

RM 427

A - men, a - men, A - men, a - men, A - men, a - men.

©2023 Robert M. Mondoy. www.mondoymusic.com. All rights reserved. Used with permission.

Segunda Missa Bossa Nova
Final Doxology

SM 527

For the king - dom, the pow - er and the glo - ry are yours now and for - ev - er.

©2023 Robert M. Mondoy. www.mondoymusic.com. All rights reserved. Used with permission.

Segunda Missa Bossa Nova
Lamb of God

SM 628

Lamb of God, you take a - way the sins of the world, have mer - cy on us. world, grant us, grant us peace.

©2023 Robert M. Mondoy. www.mondoymusic.com. All rights reserved. Used with permission.



Please remain standing until the conclusion of the Communion Song

COMMUNION PROCESSION

Eye Has Not Seen

Hymnal 140

Eye has not seen, ear has not heard what God has ready for those who love him. Spirit of love, come, give us the mind of Jesus, teach us the wisdom of God.

1. When pain and sorrow weigh us down, be near to us, O Lord, forgive the weakness of our faith, and bear us up within your peaceful word.
2. Our lives are but a single breath, we flower and we fade, yet all our days are in your hands, so we return in love what love has made.
3. To those who see with eyes of faith, the Lord is ever near, reflected in the faces of all the poor and lowly of the world.
4. We sing a mys'try from the past, in halls where saints have trod, yet ever new the music rings, to Jesus, Living Song of God.

©18982, 1982., GIA Publications, Reprinted with permission under ONE LICENSE, License #A-735407 All rights reserved, Used with permission

LEAVETAKING SONG **Song of St. Patrick**

Hymnal 193

May the Spirit of Christ be our hope through the day, be our guard through the night, our companion on the way.

1. Christ be ever before us, Christ be ever behind us, Christ be ever within.
2. Christ upon our left hand watching, at our right hand guiding, Christ above beneath us guarding, near to us abiding.
3. Christ be in each holy silence. Christ be in our speaking, Christ in ev'ry work we offer, ever in our seeking.
4. Let us be God's light in the darkness, let us be God's kindness; Let us be God's justice and mercy, hands and feet of Christ.
5. God Creator, bless and keep us Christ be ever near us Spirit, be the light before us, gentle be our pathway.

Based on "St. Patrick's Breastplate" Martyr Haugen. ©1986 GIA Publications. Reprinted with permission under ONE LICENSE, License #A-735407 All rights reserved. Used with permission.



'Ohana in Christ

THE ANNUAL APPEAL *for the* CATHOLIC CHURCH IN HAWAII

September 2023

Aloha to All,

Peace be with you!

*May the Spirit of Christ be our hope through the day,
be our guard through the night, our companion on the way.*

Song of St. Patrick, Martyr Haugen

Each day, the Catholic Church in Hawaii shares the Spirit of Christ throughout our 'Ohana of parishes, schools, social agencies, and communities across the Islands. This is all possible thanks to your generous response to our Catholic mission and the call to Witness to Jesus.

Beyond the good works at each parish, the annual '**Ohana in Christ**' appeal helps us respond to the material and spiritual needs of the greater church. As detailed in the list below, funds raised support many important services and ministries throughout the Diocese of Honolulu that no single faith community could meet alone.

I am deeply grateful for the ways you have contributed to this work in the past. Once again, I humbly ask for you to prayerfully consider making a generous gift to this important appeal. Please know that I pray for you and your loved ones each day - and will remember all donors in a special Mass.

In the Spirit of Christ - and together as '**Ohana in Christ**' - we can and will respond to the Lord's call and continue to build His Kingdom.

Sincerely yours in Christ,

Most Reverend Larry Silva
Bishop of Honolulu



P.S. For more information on how to live out the Church's mission, or to make a gift to help your parish reach its 'OIC goal, please visit catholicahawaii.org. MAHALO!

Your donations are critical in helping to provide these ministries and services:

Priests & Deacons

- Professional development
- Recruitment & assignment
- Permanent Deacon Formation
- Clergy health & wellness needs

Parish Services

- Staffing & Training
- Finance & Insurance
- Savings & Loan
- Safe Environment
- Stewardship & IT
- Cemetery & Real Estate
- Emergency Preparedness

People Programs

- Youth & Young Adult
- Catholic Schools
- Adult Faith Training
- Catholic Social Ministry
- Food & Shelter Assistance
- Evangelization & Respect Life
- Hospital & Prison Ministries

And Much More

- Hawaii Catholic Herald & Diocesan eCommunications
- Cathedral Basilica, Chancery, & St. Stephen Diocesan Center
- Pope Francis & United States Conference of Catholic Bishops



'Ohana in Christ FAQs

THE ANNUAL APPEAL *for the* CATHOLIC CHURCH IN HAWAII

1. What is 'Ohana in Christ ('OIC)?

'OIC is the Annual Appeal for the Catholic Church in Hawaii. In fiscal year 2021/2022, it replaced the former Bishop's Circle Appeal to help provide needed funding for diocesan ministries, programs, and services formerly funded by the With Grateful Hearts Capital Campaign - and other efforts that individual parishes cannot sustain on their own.

2. How is 'Ohana in Christ different from the Bishop's Circle Appeal?

Along with an enhanced effort to raise awareness of the diocesan mission and financial needs - parishes are assigned a "target goal" based on their annual assessment. This year parishes are required to raise a minimum of 75% of their target goal. Parishes that fall short of the minimum will be responsible for the difference at the end of the fiscal year.

3. Parishes already pay a hefty annual assessment - isn't that enough?

Parish assessment fees provide significant funding for the diocesan mission - covering many expenses, but not all. The 'OIC Appeal helps close the gap in the annual diocesan budget.

4. What are some specific examples of what my donation will help support?

Along with the ministries, programs, and services listed on the front, your donations help support the diocesan offices and affiliated entities responsible for providing them to our faith communities and beyond.

5. Is there consideration for parishes facing significant financial challenges?

Prior to the current fiscal year, parishes have the opportunity to appeal the minimum goal requirement by submitting a written request to Bishop Larry.

6. Where does my gift go and how is it managed?

Donations given directly to 'OIC are received, processed, and acknowledged by the Hawaii Catholic Community Foundation (HCCF). Donations given at the parish level are forwarded to HCCF and credited accordingly. In turn, HCCF also oversees management of the funds and their allocations to the diocese in support of the diocesan mission.

7. Are donations to 'Ohana in Christ tax deductible?

Yes, to the extent allowable by law. For specific information, please consult your financial advisor. To make a gift today, please visit: CatholicHawaii.Org or mail your check to 'Ohana in Christ, PO Box 380019, Honolulu, HI 96838-0019. For gifts by credit card or otherwise, call the HCCF Gifts Office at (808) 372-3472.



MAHALO for your Generous Support - All Gifts are Important and Appreciated



**Society of St. Vincent de Paul
Windward Oahu Conference
St. John Vianney Parish**

St. Vincent de Paul never wrote a book about his spiritual teachings. We find the living voice of the saint in his letters and conferences in which he trained his followers for the mission of service to the poor.

The fundamental sources of his teaching are the Gospel and life. He wanted his followers to put the whole of the Gospel into the whole of their lives, which is why all that Vincent says to us has the simplicity of our everyday life and the penetrating strength of the Word of God. A favorite saying of his still used today by Vincentians worldwide is "Do the good placed in front of you."

His feast day is September 27th and his follower Blessed Fredrick Ozanam's is September 9th. Fredrick was just a young college student when a fellow student challenged him to put into practice what his Catholic Church taught. He enlisted the help of the Daughters of Charity founded by St. Vincent de Paul and St. Louise de Marillac. Thus, began the St. Vincent de Paul Society in 1833.

Our Windward Oahu Conference is the only conference in Hawaii and serves all requests from across the state. We are a small group but committed to those in need. Therefore, we answer all calls for aid and help as best we can. What do we need?

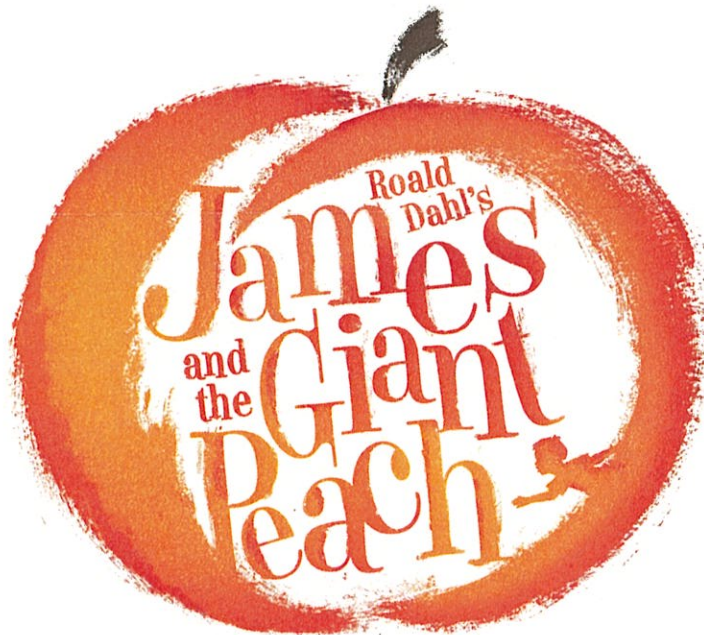
- 1. More members who desire to help those in need and be enriched spiritually.***
- 2. Donations - the money comes in and goes out. That's the Vincentian Way.***

Since October 1, 2022, our conference provided, through divine providence, \$50,637 of aid to 93 neighbors in need: \$27,625 in rental assistance, \$14,289 in utility aid, \$6,518 in food, \$2,205 in household items or services.

In the last month, so many St. Vincent de Paul Conferences across the country have called our local conference to offer help to the folks on Maui. Their concern, prayers, and financial aid for our Maui residents to recover some semblance of normal is heart-warming. These donations to our Maui fund will enable us to respond to those families who need assistance in the months ahead. It really brings to light the fact that we are all one family, the family of God.

IN APPRECIATION OF YOUR SUPPORT OF
SACRED HEARTS ACADEMY

PLEASE JOIN US FOR
THE OPENING PERFORMANCE OF



FRIDAY, SEPTEMBER 29

MAMIYA THEATRE (SAINT LOUIS SCHOOL)

- > 6:00 p.m. Cocktail and Dinner Reception
- > 7:00 p.m. Performance

(Valet Parking Available)

TO RESERVE YOUR TICKETS:

RSVP BY SEPTEMBER 20

<https://bit.ly/shaplay23>

specialevents@sacredhearts.org

808.734.5058 Ext 232



in partnership with



GIVE ALOHA

TO SUPPORT

ST JOHN VIANNEY SCHOOL

1

SHOP AT ANY
FOODLAND, SACK N
SAVE AND FOODLAND
FARMS STORES
THROUGHOUT THE
MONTH OF SEPTEMBER

2

SHOW YOUR
MAIKA'I CARD AT
CHECKOUT

3

USE CODE **79116**
TO DONATE TO
ST JOHN VIANNEY
SCHOOL

Your contribution of any size will help provide needed resources to the school.

A percentage of the donations (up to \$249) made by customers enrolled in the Maika'i program will be matched by Foodland and the Western Union Foundation. Donations can be made without a Maika'i card, but these donations will not be matched.



give aloha

Foodland's Annual Community Matching Gifts Program

For more information please visit:
www.givealoha.foodland.com/General/ProgramInfo



Join Us For

PARENTS *BIBLE STUDY*

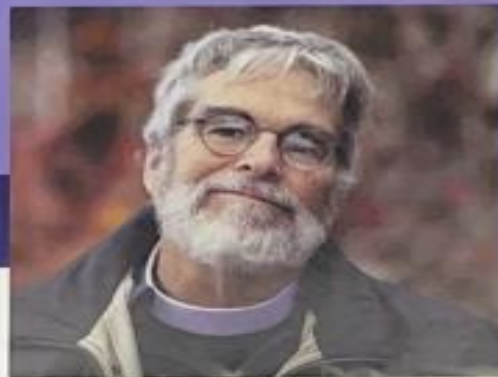
**A Biblical
Walk Through
the Mass**

**A Bible Study program for a parent's busy life!
Join us while your child is in class on this 5-week journey
with A Biblical Walk Through the Mass.**

**For more information, visit saintjohnvianneyhawaii.org
or call (808) 772-5608**

MARIANIST LECTURE SERIES
PRESENTS

God's Mechanics: How Scientists and Engineers Make Sense of Religion



with

BRO. GUY CONSOLMAGNO, S.J.

Director, Specola Vaticana | Vatican City State

Sunday, October 8, 2023 | 4 PM

Mystical Rose Oratory

Chaminade University of Honolulu

Brother Guy Consolmagno, S.J. is the Director of the Vatican Observatory and will speak about the connection between science and religion.

He is the author of several popular books including *Turn Left at Orion* (with Dan Davis) and *Would You Baptize an Extraterrestrial?* (with Paul Mueller).



Learn more at
chaminade.edu/marianist-lecture

SPONSORED BY

MARIANIST CENTER
OF HAWAII



ST. JOHN VIANNEY PARISH RELIGIOUS EDUCATION 2023-2024 CALENDAR

SEPTEMBER '23

| Su | M | T | W | Th | F | Sa |
|----|----|----|----|----|----|----|
| | | | | | 1 | 2 |
| 3 | 4 | 5 | 6 | 7 | 8 | 9 |
| 10 | 11 | 12 | 13 | 14 | 15 | 16 |
| 17 | 18 | 19 | 20 | 21 | 22 | 23 |
| 24 | 25 | 26 | 27 | 28 | 29 | 30 |

- 2 5:00pm - Youth Led Mass
- 10 First Day of Classes
10:30am - RE Parent Orientation
- 17 **Catechetical Sunday**
10 :30am - CGS Parents' Session
- 19 6:30pm - FRCE Parent's Orientation (Virtual)
- 22 6:30pm - Girls' Bible Study
- 26 6 :30pm Confirmation Parent's Orientation (Virtual)

OCTOBER '23

| Su | M | T | W | Th | F | Sa |
|----|----|----|----|----|----|----|
| 1 | 2 | 3 | 4 | 5 | 6 | 7 |
| 8 | 9 | 10 | 11 | 12 | 13 | 14 |
| 15 | 16 | 17 | 18 | 19 | 20 | 21 |
| 22 | 23 | 24 | 25 | 26 | 27 | 28 |
| 29 | 30 | 31 | | | | |

- 3 6:00pm - Power and Grace – Sacramental Parent's Session
- 14 Youth Led Mass
6:00pm – Family Faith Formation
- 14 5:00pm - Youth Led Mass
- 8 NO CLASS – Fall Break
- 10 6:00pm - Confirmation Class
- 15 *Deadline for Sacramental/New Students to Submit Baptismal Cert.*
- 20 6:30pm - Girls' Bible Study
- 27 6:00pm - Parish Trunk-or-Treat

NOVEMBER '23

| Su | M | T | W | Th | F | Sa |
|----|----|----|----|----|----|----|
| | | | 1 | 2 | 3 | 4 |
| 5 | 6 | 7 | 8 | 9 | 10 | 11 |
| 12 | 13 | 14 | 15 | 16 | 17 | 18 |
| 19 | 20 | 21 | 22 | 23 | 24 | 25 |
| 26 | 27 | 28 | 29 | 30 | | |

- 1 **All Saints Day**
- 4 5:00pm - Youth Led Mass
- 5 *Deadline to Submit Confirmation Info/Registration*
- 7 Power and Grace – Sacramental Parent's Session
- 14 6:00pm - Confirmation Class
- 17 6:30pm - Girls' Bible Study
- 18 9:00am - FRCE - First Reconciliation Retreat
- 19 10:30am - CGS Parent's Session
Deadline for Sacramental Students to Submit Letter to Fr. Vincent
- 26 NO CLASS – Thanksgiving Break
Christ the King

DECEMBER '23

| Su | M | T | W | Th | F | Sa |
|----|----|----|----|----|----|----|
| | | | | | 1 | 2 |
| 3 | 4 | 5 | 6 | 7 | 8 | 9 |
| 10 | 11 | 12 | 13 | 14 | 15 | 16 |
| 17 | 18 | 19 | 20 | 21 | 22 | 23 |
| 24 | 25 | 26 | 27 | 28 | 29 | 30 |
| 31 | | | | | | |

- 2 5pm - Youth Led Mass
Confirmation Rite of Enrollment
6:00pm - Advent Wreath Making
- 3 **First Sunday of Advent**
- 5 6:00pm - Power and Grace – Sacramental Parent's Session
- 8 6:30pm - Girls' Bible Study
Feast of the Immaculate Conception (Holy Day of Obligation)
- 9 10am - First Reconciliation
- 12 6:00pm - Confirmation Class
- 15 & 16 Living Nativity
- 17 NO CLASS – Christmas Break
- 24 NO CLASS – Christmas Break
- 25 **Christmas**
- 31 NO CLASS – Christmas Break

ST. JOHN VIANNEY PARISH CATECHETICAL PROGRAMS

CHILDREN'S LITURGY OF THE WORD

(Grade: PreK – 2)

During 9am Mass, Parish Lanai

CATECHESIS OF THE GOOD SHEPHERD - LEVELS 1 – 3

(Grade: PreK – 5)

10:15 – 11:45am, Parish Basement

YOUTH GROUP

(Grade: 6 – 12)

Every other Sunday

10:15 – 11:45am, Parish Boardroom/Lounge

| <p style="text-align: center;">JANUARY '24</p> <table border="1"> <thead> <tr> <th>Su</th> <th>M</th> <th>T</th> <th>W</th> <th>Th</th> <th>F</th> <th>Sa</th> </tr> </thead> <tbody> <tr> <td></td> <td>1</td> <td>2</td> <td>3</td> <td>4</td> <td>5</td> <td>6</td> </tr> <tr> <td>7</td> <td>8</td> <td>9</td> <td>10</td> <td>11</td> <td>12</td> <td>13</td> </tr> <tr> <td>14</td> <td>15</td> <td>16</td> <td>17</td> <td>18</td> <td>19</td> <td>20</td> </tr> <tr> <td>21</td> <td>22</td> <td>23</td> <td>24</td> <td>25</td> <td>26</td> <td>27</td> </tr> <tr> <td>28</td> <td>29</td> <td>30</td> <td>31</td> <td></td> <td></td> <td></td> </tr> </tbody> </table> | Su | M | T | W | Th | F | Sa | | 1 | 2 | 3 | 4 | 5 | 6 | 7 | 8 | 9 | 10 | 11 | 12 | 13 | 14 | 15 | 16 | 17 | 18 | 19 | 20 | 21 | 22 | 23 | 24 | 25 | 26 | 27 | 28 | 29 | 30 | 31 | | | | <p>6 5:00pm – Youth Led Mass 7 <i>Epiphany of the Lord</i> 9 6:00pm - Confirmation Class 21 10:30am - Confirmation Sponsor Meeting 26 6:30pm - Girls' Bible Study 28 NO CLASS – Breakfast with the Bishop</p> | | | | | | | |
|---|----|----|----|----|----|----|----|--|---|---|---|---|---|---|---|---|---|----|----|----|----|----|----|----|----|----|----|----|----|----|----|----|----|----|----|----|----|----|----|----|----|----|--|--|--|--|--|--|--|---|
| Su | M | T | W | Th | F | Sa | | | | | | | | | | | | | | | | | | | | | | | | | | | | | | | | | | | | | | | | | | | | |
| | 1 | 2 | 3 | 4 | 5 | 6 | | | | | | | | | | | | | | | | | | | | | | | | | | | | | | | | | | | | | | | | | | | | |
| 7 | 8 | 9 | 10 | 11 | 12 | 13 | | | | | | | | | | | | | | | | | | | | | | | | | | | | | | | | | | | | | | | | | | | | |
| 14 | 15 | 16 | 17 | 18 | 19 | 20 | | | | | | | | | | | | | | | | | | | | | | | | | | | | | | | | | | | | | | | | | | | | |
| 21 | 22 | 23 | 24 | 25 | 26 | 27 | | | | | | | | | | | | | | | | | | | | | | | | | | | | | | | | | | | | | | | | | | | | |
| 28 | 29 | 30 | 31 | | | | | | | | | | | | | | | | | | | | | | | | | | | | | | | | | | | | | | | | | | | | | | | |
| <p style="text-align: center;">FEBRUARY '24</p> <table border="1"> <thead> <tr> <th>Su</th> <th>M</th> <th>T</th> <th>W</th> <th>Th</th> <th>F</th> <th>Sa</th> </tr> </thead> <tbody> <tr> <td></td> <td></td> <td></td> <td></td> <td>1</td> <td>2</td> <td>3</td> </tr> <tr> <td>4</td> <td>5</td> <td>6</td> <td>7</td> <td>8</td> <td>9</td> <td>10</td> </tr> <tr> <td>11</td> <td>12</td> <td>13</td> <td>14</td> <td>15</td> <td>16</td> <td>17</td> </tr> <tr> <td>18</td> <td>19</td> <td>20</td> <td>21</td> <td>22</td> <td>23</td> <td>24</td> </tr> <tr> <td>25</td> <td>26</td> <td>27</td> <td>28</td> <td>29</td> <td></td> <td></td> </tr> </tbody> </table> | Su | M | T | W | Th | F | Sa | | | | | 1 | 2 | 3 | 4 | 5 | 6 | 7 | 8 | 9 | 10 | 11 | 12 | 13 | 14 | 15 | 16 | 17 | 18 | 19 | 20 | 21 | 22 | 23 | 24 | 25 | 26 | 27 | 28 | 29 | | | <p>3 5pm - Youth Led Mass 6 6:00pm - Power and Grace – Sacramental Parent's Session 11 10:30am - CGS Parent's Session 13 6:00pm - Confirmation Class 14 <i>Ash Wednesday</i> 16 7:00pm – Stations of the Cross 17 9:00am - Confirmation Candidate and Sponsor Day 18 NO CLASS – President's Day <i>First Sunday of Lent</i> 23 6:30pm - Girls' Bible Study 7:00pm – Stations of the Cross</p> | | | | | | | |
| Su | M | T | W | Th | F | Sa | | | | | | | | | | | | | | | | | | | | | | | | | | | | | | | | | | | | | | | | | | | | |
| | | | | 1 | 2 | 3 | | | | | | | | | | | | | | | | | | | | | | | | | | | | | | | | | | | | | | | | | | | | |
| 4 | 5 | 6 | 7 | 8 | 9 | 10 | | | | | | | | | | | | | | | | | | | | | | | | | | | | | | | | | | | | | | | | | | | | |
| 11 | 12 | 13 | 14 | 15 | 16 | 17 | | | | | | | | | | | | | | | | | | | | | | | | | | | | | | | | | | | | | | | | | | | | |
| 18 | 19 | 20 | 21 | 22 | 23 | 24 | | | | | | | | | | | | | | | | | | | | | | | | | | | | | | | | | | | | | | | | | | | | |
| 25 | 26 | 27 | 28 | 29 | | | | | | | | | | | | | | | | | | | | | | | | | | | | | | | | | | | | | | | | | | | | | | |
| <p style="text-align: center;">MARCH '24</p> <table border="1"> <thead> <tr> <th>Su</th> <th>M</th> <th>T</th> <th>W</th> <th>Th</th> <th>F</th> <th>Sa</th> </tr> </thead> <tbody> <tr> <td></td> <td></td> <td></td> <td></td> <td></td> <td>1</td> <td>2</td> </tr> <tr> <td>3</td> <td>4</td> <td>5</td> <td>6</td> <td>7</td> <td>8</td> <td>9</td> </tr> <tr> <td>10</td> <td>11</td> <td>12</td> <td>13</td> <td>14</td> <td>15</td> <td>16</td> </tr> <tr> <td>17</td> <td>18</td> <td>19</td> <td>20</td> <td>21</td> <td>22</td> <td>23</td> </tr> <tr> <td>24</td> <td>25</td> <td>26</td> <td>27</td> <td>28</td> <td>29</td> <td>30</td> </tr> <tr> <td>31</td> <td></td> <td></td> <td></td> <td></td> <td></td> <td></td> </tr> </tbody> </table> | Su | M | T | W | Th | F | Sa | | | | | | 1 | 2 | 3 | 4 | 5 | 6 | 7 | 8 | 9 | 10 | 11 | 12 | 13 | 14 | 15 | 16 | 17 | 18 | 19 | 20 | 21 | 22 | 23 | 24 | 25 | 26 | 27 | 28 | 29 | 30 | 31 | | | | | | | <p>1 7:00pm – Stations of the Cross 2 5:00pm – Youth Led Mass 5 6:00pm - Power and Grace – Sacramental Parent's Session 8 7:00pm – Stations of the Cross 15 7:00pm – Stations of the Cross 17 NO CLASS – Spring Break 22 6:30pm - Girls' Bible Study 7:00pm – Stations of the Cross 23 9:00am - First Eucharist Retreat 29 <i>Good Friday</i> 31 NO CLASS – Easter</p> |
| Su | M | T | W | Th | F | Sa | | | | | | | | | | | | | | | | | | | | | | | | | | | | | | | | | | | | | | | | | | | | |
| | | | | | 1 | 2 | | | | | | | | | | | | | | | | | | | | | | | | | | | | | | | | | | | | | | | | | | | | |
| 3 | 4 | 5 | 6 | 7 | 8 | 9 | | | | | | | | | | | | | | | | | | | | | | | | | | | | | | | | | | | | | | | | | | | | |
| 10 | 11 | 12 | 13 | 14 | 15 | 16 | | | | | | | | | | | | | | | | | | | | | | | | | | | | | | | | | | | | | | | | | | | | |
| 17 | 18 | 19 | 20 | 21 | 22 | 23 | | | | | | | | | | | | | | | | | | | | | | | | | | | | | | | | | | | | | | | | | | | | |
| 24 | 25 | 26 | 27 | 28 | 29 | 30 | | | | | | | | | | | | | | | | | | | | | | | | | | | | | | | | | | | | | | | | | | | | |
| 31 | | | | | | | | | | | | | | | | | | | | | | | | | | | | | | | | | | | | | | | | | | | | | | | | | | |
| <p style="text-align: center;">APRIL '24</p> <table border="1"> <thead> <tr> <th>Su</th> <th>M</th> <th>T</th> <th>W</th> <th>Th</th> <th>F</th> <th>Sa</th> </tr> </thead> <tbody> <tr> <td></td> <td>1</td> <td>2</td> <td>3</td> <td>4</td> <td>5</td> <td>6</td> </tr> <tr> <td>7</td> <td>8</td> <td>9</td> <td>10</td> <td>11</td> <td>12</td> <td>13</td> </tr> <tr> <td>14</td> <td>15</td> <td>16</td> <td>17</td> <td>18</td> <td>19</td> <td>20</td> </tr> <tr> <td>21</td> <td>22</td> <td>23</td> <td>24</td> <td>25</td> <td>26</td> <td>27</td> </tr> <tr> <td>28</td> <td>29</td> <td>30</td> <td></td> <td></td> <td></td> <td></td> </tr> </tbody> </table> | Su | M | T | W | Th | F | Sa | | 1 | 2 | 3 | 4 | 5 | 6 | 7 | 8 | 9 | 10 | 11 | 12 | 13 | 14 | 15 | 16 | 17 | 18 | 19 | 20 | 21 | 22 | 23 | 24 | 25 | 26 | 27 | 28 | 29 | 30 | | | | | <p>6 5:00pm – Youth Led Mass 6:00pm – Family Faith Formation 7 10:30am - CGS Parent's Session 9 6:00pm - Confirmation Class 13 9:00am - Confirmation Retreat (Grades 5 and below) Confirmation Retreat (Grades 6 and above) (subject to change) 20 10:00am - Confirmation/FRCE Interviews 7 10:30am - CGS Parent's Session 26 6:30pm - Girls' Bible Study</p> | | | | | | | |
| Su | M | T | W | Th | F | Sa | | | | | | | | | | | | | | | | | | | | | | | | | | | | | | | | | | | | | | | | | | | | |
| | 1 | 2 | 3 | 4 | 5 | 6 | | | | | | | | | | | | | | | | | | | | | | | | | | | | | | | | | | | | | | | | | | | | |
| 7 | 8 | 9 | 10 | 11 | 12 | 13 | | | | | | | | | | | | | | | | | | | | | | | | | | | | | | | | | | | | | | | | | | | | |
| 14 | 15 | 16 | 17 | 18 | 19 | 20 | | | | | | | | | | | | | | | | | | | | | | | | | | | | | | | | | | | | | | | | | | | | |
| 21 | 22 | 23 | 24 | 25 | 26 | 27 | | | | | | | | | | | | | | | | | | | | | | | | | | | | | | | | | | | | | | | | | | | | |
| 28 | 29 | 30 | | | | | | | | | | | | | | | | | | | | | | | | | | | | | | | | | | | | | | | | | | | | | | | | |
| <p style="text-align: center;">MAY '24</p> <table border="1"> <thead> <tr> <th>Su</th> <th>M</th> <th>T</th> <th>W</th> <th>Th</th> <th>F</th> <th>Sa</th> </tr> </thead> <tbody> <tr> <td></td> <td></td> <td></td> <td>1</td> <td>2</td> <td>3</td> <td>4</td> </tr> <tr> <td>5</td> <td>6</td> <td>7</td> <td>8</td> <td>9</td> <td>10</td> <td>11</td> </tr> <tr> <td>12</td> <td>13</td> <td>14</td> <td>15</td> <td>16</td> <td>17</td> <td>18</td> </tr> <tr> <td>19</td> <td>20</td> <td>21</td> <td>22</td> <td>23</td> <td>24</td> <td>25</td> </tr> <tr> <td>26</td> <td>27</td> <td>28</td> <td>29</td> <td>30</td> <td>31</td> <td></td> </tr> </tbody> </table> | Su | M | T | W | Th | F | Sa | | | | 1 | 2 | 3 | 4 | 5 | 6 | 7 | 8 | 9 | 10 | 11 | 12 | 13 | 14 | 15 | 16 | 17 | 18 | 19 | 20 | 21 | 22 | 23 | 24 | 25 | 26 | 27 | 28 | 29 | 30 | 31 | | <p>4 5:00pm – Youth Led Mass 9 <i>Feast of the Ascension of the Lord</i> 12 NO CLASS 17 6:30pm - Girls' Bible Study 18 10:00am – First Eucharist/Confirmation Rehearsal 5:00pm– First Eucharist/Confirmation 19 Last Day of CGS/YG <i>Pentecost</i></p> | | | | | | | |
| Su | M | T | W | Th | F | Sa | | | | | | | | | | | | | | | | | | | | | | | | | | | | | | | | | | | | | | | | | | | | |
| | | | 1 | 2 | 3 | 4 | | | | | | | | | | | | | | | | | | | | | | | | | | | | | | | | | | | | | | | | | | | | |
| 5 | 6 | 7 | 8 | 9 | 10 | 11 | | | | | | | | | | | | | | | | | | | | | | | | | | | | | | | | | | | | | | | | | | | | |
| 12 | 13 | 14 | 15 | 16 | 17 | 18 | | | | | | | | | | | | | | | | | | | | | | | | | | | | | | | | | | | | | | | | | | | | |
| 19 | 20 | 21 | 22 | 23 | 24 | 25 | | | | | | | | | | | | | | | | | | | | | | | | | | | | | | | | | | | | | | | | | | | | |
| 26 | 27 | 28 | 29 | 30 | 31 | | | | | | | | | | | | | | | | | | | | | | | | | | | | | | | | | | | | | | | | | | | | | |

Religious Education Department

(808) 772-5608



Check us out on Facebook

St. John Vianney Parish, Kailua

Website

<http://www.saintjohnvianneyhawaii.org/>



Check us out on Instagram

@808sjv

FALL 2023

ST. JOHN VIANNEY PARISH YOUTH MINISTRY

SEPTEMBER

| SU | M | TU | W | Th | F | Sa |
|----|----|----|----|----|----|----|
| | | | | | 1 | 2 |
| 3 | 4 | 5 | 6 | 7 | 8 | 9 |
| 10 | 11 | 12 | 13 | 14 | 15 | 16 |
| 17 | 18 | 19 | 20 | 21 | 22 | 23 |
| 24 | 25 | 26 | 27 | 28 | 28 | 30 |

Youth Led Mass – 5:00p

2

Youth Group – 10:15a

10, 24

Youth Praise and Worship – 1:30p

2, 10, 17, 24

Youth Online Bible Study – 6:30p

4, 11, 18, 25

extra Hour – 6:30p

6, 13, 20, 27

OCTOBER

| SU | M | TU | W | Th | F | Sa |
|----|----|----|----|----|----|----|
| 1 | 2 | 3 | 4 | 5 | 6 | 7 |
| 8 | 9 | 10 | 11 | 12 | 13 | 14 |
| 15 | 16 | 17 | 18 | 19 | 20 | 21 |
| 22 | 23 | 24 | 25 | 26 | 27 | 28 |
| 29 | 30 | 31 | | | | |

Youth Led Mass – 5:00p

14

Youth Group – 10:15a

8, 22

Youth Praise and Worship – 1:30p

1, 7, 15, 22, 29

Youth Online Bible Study – 6:30p

2, 9, 16, 23, 30

MS Girls Bible study – 6:30p

13

extra Hour – 6:00pm

4, 11, 18, 25

NOVEMBER

| SU | M | TU | W | Th | F | Sa |
|----|----|----|----|----|----|----|
| | | | 1 | 2 | 3 | 4 |
| 5 | 6 | 7 | 8 | 9 | 10 | 11 |
| 12 | 13 | 14 | 15 | 16 | 17 | 18 |
| 19 | 20 | 21 | 22 | 23 | 24 | 25 |
| 26 | 27 | 28 | 29 | 30 | | |

Youth Led Mass – 5:00p

4

Youth Group – 10:15a

5, 19

Youth Praise and Worship – 1:30p

4, 12, 19, 26

Youth Online Bible Study – 6:30p

6, 13, 20, 27

MS Girls Bible study – 6:30p

10*

extra Hour – 6:00pm

1, 8, 15, 29

DECEMBER

| SU | M | TU | W | Th | F | Sa |
|----|----|----|----|----|----|----|
| | | | | | 1 | 2 |
| 3 | 4 | 5 | 6 | 7 | 8 | 9 |
| 10 | 11 | 12 | 13 | 14 | 15 | 16 |
| 17 | 18 | 19 | 20 | 21 | 22 | 23 |
| 24 | 25 | 26 | 27 | 28 | 29 | 30 |
| 31 | | | | | | |

Youth Led Mass – 5:00p

2

Youth group – 10:15a

3, 10

Youth Praise and Worship – 1:30p

2, 10, 17

Youth Online Bible Study – 6:30p

4, 11

MS Girls Bible study – 6:30p

8

extra Hour – 6:00pm

Confirmation DEADLINES & REMINDERS

Confirmation Class – 6:00p

Oct. 10, Nov. 14, Dec. 12

Baptismal Certificate Due – Oct. 15

Confirmation Info Due – Nov. 5

Letter to Fr. Vincent – Nov. 19

Rite of Enrollment – Dec. 2

save the Date

Youth Ministry Kick-off – Sep. 2

Family Faith Formation – Oct. 14

Trunk-or-Treat – Oct. 27

NCYC – Nov. 20-22

Advent Wreath Making – Dec. 2

Living Nativity – Dec. 15 & 16

CONNECT WITH US

Religious Education Department

(808) 772-5608

Parish Office

(808) 262-8317

FB: St. John Vianney Parish, Kailua –

Religious Education

IG: @808sjv

Website: www.saintjohnvianneyhawaii.org