

January 21, 2024 Third Sunday in Ordinary Time

Sunday Bulletin

St. John Vianney Catholic Church, Kailua

WWW.SAINTJOHNVIANNEYHAWAII.ORG | SJVKAILUAPARISH@RCCHAWAII.ORG
920 KEOLU DRIVE, KAILUA, HI 96734 | 808-262-8317 | REV. VINCENT VU, PASTOR



ANNOUNCEMENTS

Today is Word of God Sunday

Pope Francis established that “the Third Sunday in Ordinary Time is to be devoted to the celebration, study, and dissemination of the Word of God.” We are blessed by our SJV lectors who have answered God’s call to serve their community by proclaiming God’s Word during our Saturday evening, Sunday, and weekday Masses. On a rotational basis, they prepare by practicing the readings of the day and proclaiming God’s Word to the congregation during Mass times.

Our lector ministers for daily and Sunday liturgy Masses are: Katie Barbiето, Steffanie Beissel, Tyler Beissel, Kimo Conroy, Luca Cordaro, Phil Cordaro, John Creedon, Liv Delgado, Violet DeCaires, Jim Doyle, Paul Garcia, Sofia Garcia, David Hanlon, Michael Hughes, Ellen Huntley, Ed Klein, Harlan Klein, Virginia (Ginny) Klein, William Libby, Jade Lau, Maggie Magee, Brandon Nicolas, Maddie Nicolas, Shawn Nicolas, Lawakua Palafox, Luka Palafox, Momi Kaanoi Palafox, Louis Primavera, Kamalani Rodrigues, Gina Salehi, Michael Salehi, Lei Tamura, Esther Tokars, Clinton Yamashita, Dara Yatsushiro, Frances Wong, and Frances Yoshimitsu. **SJV student lectors at Class Masses:** Grade 8: Campbell Bagoood, Kaile Chang, Shawn Nicolas, Cash Teixeira. Grade 7: Aurora Baum, Ashlyn Kanahale, Brooke Muragin. Grade 6: Emily Brooks, David Conroy, Kashton Gauthe-Kalama, Reis Schopler, Siena-Grace Tufaga.

Breakfast with the Bishop is next Sunday, January 28, 2024

Please Support Your Parish School by attending its 13th Annual Breakfast with the Bishop Next Sunday January 28th. Serving times follow the end of Mass and are at 8 and 10 a.m. and noon. Tickets are on sale this weekend outside of church. \$20 for adults and \$12 for age 15 and younger. Delight in entertainment by our school choirs, musicians, hula halau and more. Meet several exciting celebrity guests. Enjoy a delicious breakfast buffet with the Most Reverend Larry Silva, Bishop of Honolulu. An all-you-can-eat buffet complete with eggs, fried rice, potatoes, ham, sausages, assorted breads, fresh fruit, and a pancakes station. Receive complementary tickets by becoming a sponsor of this event. Your donations of tropical plants and flower arrangers are needed for this event. Please drop off greenery on Friday, January 26, between 9 a.m. and 12 p.m. at the Parish Hall. For more information go to our website.

Jan 28th Second Collection, Church in Latin America & Black and Indian Mission

Next week we will take up the collection for the Church in Latin America. For many in Latin America and the Caribbean, a rising secular culture, difficult rural terrain, and a shortage of ministers all present obstacles to practicing the faith. Your support for the collection provides lay leadership training, catechesis, priestly and religious formation, and other programs to share our Catholic Faith with those who long to hear the Good News of Christ. The Black and Indian Mission Collection helps build the Church in African, American, Native American and Alaska Native communities from coast to coast. Schools, parish religious education programs, and diocesan ministries depend on your generosity to help them spread the Gospel of Jesus Christ.

There are two separate envelopes for your gifts.

Prayers for Healing

Ruth Alves	Myngoc Le
Anna Asinsin	Brian Lewis
Edward Balderston	Emily Lim
Jim Balderston	Kasey Lopes
Terry Barnaby	Mike Lauriano
Clark Bernales	Sylvia Manlutac
Robert Bernales	Mary Matos
Aileen Blanc	Lorraina McCabe
Michelle Brown	Sandy McAulton
Donovan Caldeira	Gloria Medeiros
Sheryl Caldeira	Beverly Mink
Rod Castanha	Bobby Mink
Carolyn Chong	Linda Morgan
Glenn Chong	Audrey Motonaga
Mollie Chun	Hope Montalvo
Kathy Dean	Jennifer Ann Ng
Sten Deschuyffeeler	Sharon Nisbet-Jones
John Dixon	Mary Odom
Pat Drury	Stephanie Pahia
Hamilton Durante	Cayetana Paras
John Glorioso, Jr	James Reis
Tom Glorioso	Jean Rich
Angeline Goh	Bill Roman
Jayla Gomes	Antonio Salcedo
Dan Gorecki	Par Salehi
Milli Gorecki	Leoda Shizuma
Tim Hudson	Deni Smith
Kailey Jong-Perez	Bernardo Soriano
Sylvia Ann Pao Kruse	John Sutton
Bruce Kumashiro	Erin Tagupa
Charlien Kumashiro	Christine Taylor
Tony Lambio	Gabrielle Taylor
Hayden Lau	Terri Taylor

Repose of Soul

+Marie Botelho

+Patricia Santos, Funeral Mass, Tuesday,
Jan. 23, 2024 @ 10:30 a.m.

+Robert Young, Funeral Mass, Thursday,
Jan. 25, 2024 @ 11 a.m.

+Ramona Souza, Funeral Mass, Saturday,
Feb. 24, 2024 @ 11 a.m.

Next Sunday's Readings

1st Reading: Deuteronomy 18:15-20

2nd Reading: 1 Corinthians 7:32-35

Gospel: Mark 1:21-28

Upcoming Events

- Sun, Jan 28, 8 a.m., 10 a.m. and noon - Breakfast with the Bishop, Parish Hall
- Fri, Feb 2, 7 p.m., Robert Mondoy presents an All-Beethoven Concert
- Sat, Feb 3, 8 a.m. Anointing of the Sick in Mass, Adoration and Reconciliation
- Sat-Sun, Feb 3-4, 6 p.m.—8:30 a.m. Middle School Lock-In Retreat for all youth in grades 6-8
- Wed, Feb 14 is Ash Wednesday

Use the QR code at the entrance to the church to read the full edition of the Sunday Bulletin online or in myParish app for more announcements.

Download the music leaflet to sing along during Mass from your smart device.



SCHOOL NEWS

Next Sunday on January 28th your parish school is hosting its 13th annual **Breakfast with the Bishop** at 8 a.m., 10 a.m. and noon in the parish hall. Our special guest is the Most Reverend Larry Silva, Bishop of Honolulu who will thank you for supporting your school. Our pastor, Fr. Vincent Vu and our principal, Mrs. DeMello, will also greet and thank each of you for your support.

In addition to a delicious buffet, our talented students will entertain you with song, dance and music. You will also get to meet several local celebrities, including Chef Chai, comedian Frank DeLima, Weatherman Pete Caggiano, NCIS-Hawaii actor Alex Tarrant, and two young actresses. Funds raised will go toward our tuition assistance program. Our students, their families and our teachers are looking forward to seeing you at one of the servings. Our parish is truly blessed by your support which allows us to continue providing an outstanding education to our children.

MOTHER MARIANNE’S FEAST DAY AND JANUARY KALAUPAPA MONTH

Tuesday, January 23 is the Memorial of Saint Marianne Cope, Virgin (Obligatory Memorial in the Diocese of Honolulu). January was selected as the month to especially pay tribute to the people of Kalaupapa and to learn more about the history. A number of important events occurred in January throughout the settlement’s history -- including January 6, 1866, when the first 12 people affected by leprosy were sent to the peninsula. They were the first of nearly 8,000. Other significant dates include the births of both Josef DeVeuster (later Father Damien, now Saint Damien), Barbara Koob (later Mother Marianne Cope, now Saint Marianne) and the day in 1978 that began a 5 1/2-year protest led by the people of Kalaupapa and Hale Mohalu when they stood up for their rights to be included in decisions that affected them.

RIGHT OF ACCEPTANCE FOR KEALA TIM SING

The Church joyfully welcomes today Keala Tim Sing who will be received into the Order of Catechumens. In the months to come Keala will prepare for his initiation into the Christian faith by baptism, confirmation, and the Eucharist.

BEETHOVEN RECITAL ON FEB 2



Robert M. Mondoy, music director and minister of St. John Vianney Church in Kailua, and music consultant to the Diocese of Honolulu, is presenting a concert recital exclusively featuring the works of Ludwig van Beethoven. The recital will be held at the parish church of SJV on Friday, February 2 at 7 p.m. The presentation is just over an hour long. The concert is **free** to attend, and

an rsvp, requested but not required, can be made at sjvkailuaparish@rcchawaii.org. You can view Robert’s piano performances on YouTube by searching “Rob Mondoy plays”.

CATHOLIC FAITH CORNER



A YEAR OF EUCHARISTIC REVIVAL

The Introductory Rites of Mass

The Gloria: The ending of the Kyrie Eleison leads to the Gloria. The Gloria is an ancient hymn of praise for the Trinity. This hymn gets its name from its first line in Latin, “*Gloria in excelsis Deo...*” which is part of the greeting that an army of angels gave to the shepherds on that cold December night 2000+ years ago (Luke 2:13-14). When singing the Gloria, we are joining in with all the angels in heaven in their hymn of praise that continues for all time.

The Collect: After the Gloria, the priest invites the people to pray. This prayer is known as the **collect**, because it collects all the prayers of the people as individuals and unites us as a community in prayer. All, together with the priest, we observe a *brief silence* so that we may be conscious of the fact that we are in God’s presence and may formulate our petitions mentally. Then the priest says the prayer. In accordance with the ancient tradition of the Church, the collect prayer is usually addressed to God the Father, through Christ, in the Holy Spirit. The people, uniting themselves to this entreaty, make the prayer their own with the acclamation, “Amen”. The collect is sometimes called the “*Opening prayer*,” but this is a misnomer because it actually closes out, rather than opens, the Introductory Rites of the Mass.

The Liturgy of the Word: After the *Collect* is finished and everyone sits down, the Mass continues with the Liturgy of the Word. *We sit down so we are ready to hear, listen and receive, focused and attentively taking in the homily.* The Liturgy of the Word is comprised of scripture readings, a homily, the profession of faith, and the prayers of the faithful. The structure of readings for Sunday Mass, consists of a first reading, a responsorial psalm, a second reading, a Gospel acclamation, and a Gospel.



DISCERN THE VOCATION OF DEACON

About Us: The Permanent Deacon Formation Program is a five-year intensive program that prepares men spiritually, intellectually, and pastorally for ordination. Men (and if married, their wives) will be formed and sent to teach, to guard and to bear witness to, and to serve the Catholic Church through the example of their lives and their ministries of word, service and charity.

Inquiry Weekends: These weekend retreats offer spiritually enriching encounter, filled with valuable information, providing men and their wives a profound experience to deeply explore the diaconate vocation. To be considered for the next cohort, applicants must attend one of these mandatory weekends, with their spouses if married, April 12-14, May 3-5 and June 14-16, 2024.

Contact us: We invite you to reserve a space online at our website: catholichawaii.org/formation. For questions and concerns, email deaconformation2@rcchawaii.org or call 808-203-6777. All accommodations, plus airfare for neighbor islanders will be covered by the program.

OFFERTORY Our gifts to God to steward the Church

Week of Dec 30, 2023—Jan 5, 2024	Envelopes/Loose	Online Giving	Total	Goal	% of Goal
Sunday Offertory	\$3,682.00	\$5,851.00	\$9,533.00	\$8,763.33	108.78%
Repair and Maintenance	\$1,055.00	\$723.00	\$1,778.00	\$1,500.00	118.53%
Major Repair and Maintenance	\$0.00	\$755.00	\$755.00	\$576.92	130.87%

Give Online



3rd Sunday in Ordinary Time

GATHERING

Thank you for placing the leaflets in the recycling box after mass , Mahalo

No ka hikina mai 'o Maliana aloha
Pane 'ia ka ualo o ka lāhui
He hu 'i mā'e'ele i ka iwi hilo
Hilia i ka ma'i ho'oka'awale

Kū a'e Maliana ka'alokuloku
I pouhana pa'a, ho'omalumalu
Maluhia 'o luna 'o lalo ala
Apo 'ia maila i ke apona aloha

Pāhola ke aloha i kai o Kaiwi
Wilia maila ka lei ho'oheno
Nohea nā pua o Kalaupapa
Pāpahi i ka makuahine pōmaika'i

Kanāho Hawai'i kau i ka hano
I ka hana aloha a Maliana Maika'i
He la'ana kūmau no ke ao ākea
Ka luhina aloha i ka lāhui kanaka

He inoa no hemolele Maliana

From the East came beloved Marianne
Answering the plea of the people
Painfully chilled to the very core
Smitten by the separating sickness

Mother Marianne took her place, intrepid
A steadfast pillar granting shelter to all
Protection and respite for high-born and low
All were brought into her loving embrace

Compassion crossed the Kaiwi Channel
Assembling all into a cherished lei
Beautiful were Kalaupapa's many blossoms
A garland of glory for a blessed mother

Hawai'i celebrates the renewal and healing
From the loving labors of Saintly Marianne
An everlasting example for all the world
Loving dedication to the human race

Text: ©2012 Puakea Nogelmeier, Tune: Robert M. Mondoy



GLORY TO GOD

Bob Hurd, 1999, 2001, arr R.M.2013 **RM 27.3**



Glory to God in the highest, and on earth peace to people of good will. We praise you, we bless you, we adore you, we glorify you, we give you thanks for your great glory,
Lord God, heavenly King, O God, almighty Father. Lord Jesus Christ, Only Begotten Son,
Lord God, Lamb of God, Son of the Father, you take away the sins of the world, have mercy on us;
you take away the sins of the world, receive our prayer;
you are seated at the right hand of the Father, have mercy on us.
For you alone are the Holy One, you alone are the Lord, you alone are the Most High, Jesus Christ,
with the Holy Spirit, in the glory of God the Father. Amen.

**RESPONSORIAL
PSALM**

Hawaiian Chang-a-lang, relaxed

Psalm 25⁴

Robert M. Mondoy

Teach me, O Lord the way.
E a - 'o mai i kou a - la i - a - 'u

Teach me O Lord the way.
E ke A - ku - a e a - 'o mai

1. Teach me how to live, Lord, show me the way. Steer me toward your truth, you, our saving God, you, my constant hope.
2. Recall your tenderness, your lasting love. To show your own goodness, God, remember us; God, remember me.
3. Good and just is the Lord, guiding those who stray. God leads all the poor, pointing out the way, pointing out our way.

©1998 Mondoy Music. Hawaiian: Puakea Nogelmeier, 2000. "Mahoe" [68]
All rights reserved. Used with permission. Go listen: mondoymusic.com

PREPARATION OF THE GIFTS

434. The Summons

KELVINGROVE (Scottish traditional)

1. Will you come and fol - low me if I but call
2. Will you leave your - self be - hind if I but call
3. Will you let the blind - ed see if I but call
4. Will you love the 'you' you hide if I but call
5. Lord, your sum - mons ech - oes true when you but call

your name? Will you go where you don't know and
your name? Will you care for cruel and kind and
your name? Will you set the pris - 'ners free and
your name? Will you quell the fear in - side and
my name. Let me turn and fol - low you and

nev - er be the same? Will you let my love be
nev - er be the same? Will you risk the hos - tile
nev - er be the same? Will you kiss the lep - er
nev - er be the same? Will you use the faith you've
nev - er be the same. In your com - pa - ny I'll



shown, will you let my name be known, Will you
 stare should your life at - tract or scare? Will you
 clean, and do such as this un - seen, And ad -
 found to re - shape the world a - round, Through my
 go where your love and foot - steps show. Thus I'll



let my life be grown in you and you in me?
 let me an - swer pray'r in you and you in me?
 mit to what I mean in you and you in me?
 sight and touch and sound in you and you in me?
 move and live and grow in you and you in me.

Text: John L. Bell (b.1949); ©1987 Iona Community, GIA Publications, Inc., agent. Reprinted with permission under ONE LICENSE, License #A-735407 Music: KELVINGROVE 76 76 7776; Scottish traditional; arr. John L. Bell (b.1949); ©1987 Iona Community, GIA Publications, Inc.

Priestly People
Preface Dialogue



The Lord be with you. And with your spi - rit.



Lift up your hearts. We lift them up to the Lord.



Let us give thanks to the Lord, our God. It is right and just.

Priestly People
Holy



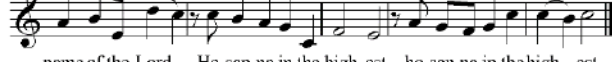
Ho - ly, ho ly, ho - ly, Ho - ly Lord God of hosts,



hea - ven and earth are full of your glo - ry. Ho - san - na in the



high - est, ho - san - na in the high - est. Blest is he who comes in the



name of the Lord. Ho - san - na in the high - est, ho - san - na in the high - est.

Priestly People
Memorial Acclamation



The mys - t'ry of faith: We pro - claim your death, O Lord,



and pro - fess your res - ur - rec - tion Un - til you



come a - gain, un - til you come a - gain.

*Priestly People® ©2002, 2014 Robert M. Mondy www.mondymusic.com. All rights reserved.

EUCCHARISTIC ACCLAMATIONS

Priestly People
Amen



A - men, a - men, a - men. A - men, a - men, a - men.

Priestly People
Final Doxology



For the king - dom, the pow - er and the glo - ry are yours,



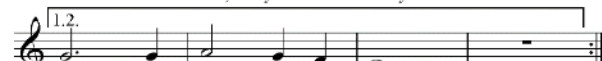
now and for ev - er.

*Priestly People® ©2002, 2014 Robert M. Mondy www.mondymusic.com. All rights reserved.

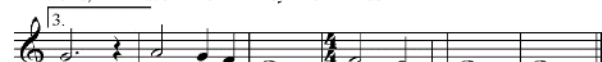
Priestly People
Lamb of God



Lamb of God, you take a - way the sins of the



world, have mer - cy on us.



world, grant us peace, grant us peace.

*Priestly People® ©2014 Robert M. Mondy www.mondymusic.com. All rights reserved.

Please remain standing until the conclusion of the Communion Procession song

COMMUNION PROCESSION

Lord, You Have Come

Hymnal 480

1. Lord, you have come to the sea shore, neither searching for the rich nor the wise, desiring only that I should follow.

O, Lord, with your eyes set upon me, gently smiling, you have spoken my name; all I longed for I have found by the water, at your side, I will seek other shores.

Señor, me has mirado a los ojos, sonriendo has dicho mi nombre, en la grena he dejado mi barca, junto a ti buscaré otro mar.

2. Lord, see my goods, my possessions; in my boat you find no power, no wealth. Will you accept, then my nets and labor?

3. Lord, take my hands and direct them. Help me spend myself in seeking the lost, returning love for the love you gave me.

4. Lord, as I drift on the waters, be the resting place of my restless heart, my life's companion, my friend and refuge.

Text and Tune©1979, 1987 Cesareo Gabarain, English by Robert C. Trupia., O.C.P. Publications. All rights reserved, Used with permission. Reprinted with permission under ONE LICENSE, License #A-735407

LEAVE-TAKING

Sing All God's Creation (*Leo: Ahe Lau Makani*)

Hymnal 261

Sing all God's creation, share with us your glory,

Praise with jubilation; love evermore.

(Do alternate between English and Hawaiian refrain)

E ka honua me ka lani lipo E ho'ōho mākou me ke aloha

1. All of the mountains echo the glory, Valleys and forest streams laugh out in glee; *E nā pōhaku*, retell the story with all the *pali* enthroned by the sea.

2. Strength of volcanoes torching the forests, New land that shapes and restores life anew. Calm of *mālie*, *Kona* winds' chorus speak to us all that God's goodness is true.

3. Rage of the sea storm, white-washing beaches, Red muddy streams reaching far past the land. Sunshine through storm clouds, warm where it reaches, teaches the earth all the love of God's plan.

4. Fish of the ocean, reef the sea's edge, *Weke* and *pūhi*, the *honu*, the sand. Fishponds and marshes, mullet and mudhens, *Ka Makua* blesses them, small and grand.

5. *Pua Lehua*, *nānū* and *'ohai*, Flowers that rival the rainbows at dusk. Sunrises' shouting, stars hush the night sky: Cycle of life teaching heavenly trust.

6. *Ola mau loa*, this is the wonder. Life conquered death through the love of the Son. Sky celebrates it, shouting with thunder. All life has meaning because of God's love.

Text: Robert M. Mondoy (b. 1952), rev. 2014. 81992 Mondoy Music, All rights reserved. Used with permission. Hawaiian by Robert M. Mondoy & Puakea Nogelmeier, 2014. Tune: *AHE LAU MAKANI*, Lili'uokalani (1838-1917)



Sponsored by the Hawaii Catholic Conference in coordination with the Parish Respect Life Ministry



A CALL TOWARDS FAITHFUL CITIZENSHIP

Saturday, January 27, 2024

St. Anthony of Padua Church

148 Makawao St # A, Kailua

9:00 - 10:30 AM

(Continental breakfast will be served)

A Community Action Network Presentation



Presented by:

Eva Andrade

Executive Director

Hawaii Catholic Conference

As members of the Catholic community, it is crucial for us to actively participate in shaping public policy in Hawai'i. Navigating the complexities of each legislative session presents its own set of challenges, with numerous issues demanding our attention. How do we, as faithful Christians, not only navigate through these concerns but also steadfastly uphold our beliefs while striving to bring about meaningful change? This presentation will include the ongoing developments of the 2024 legislative session, gaining insights on how to engage effectively. The content of this presentation will be continually updated as the legislative session unfolds, ensuring that attending, even if you've been to a previous presentation, provides valuable and current information. **Presentation is free and open to the public but registration is required.**



Register online by Friday, January 26, 2024 at www.hawaiifamilyforum.org/register or call Paulette Vernay at (808)927-1306

Please Support Your Parish School

by attending its 13th Annual

Breakfast with the Bishop

Next Sunday January 28, 2024



Enjoy a delicious breakfast buffet with
the Most Reverend Larry Silva, Bishop of Honolulu.

An all-you-can-eat buffet
complete with eggs, fried rice, potatoes, ham,
sausages, asst. breads, fresh fruit, and a pancakes station.

Serving Times

8:00 AM (after 7:00 Mass)

10:00 AM (after 9:00 Mass)

Noon (after 11:00 Mass)

Tickets on sale after all Masses

\$20.00 (\$ 12.00 for 15 and younger)

Delight in entertainment by our school
choirs, musicians, hula halau and more.
Meet several exciting celebrity guests.

**Receive COMPLEMENTARY tickets by
becoming a sponsor of this event.
See backside for details.**



Our 13th Annual Breakfast with the Bishop

Sunday, January 28, 2024
SJV Parish Hall

**Proceeds will fund our WELCOME GRANT program,
which offers parents the opportunity to choose St. John Vianney School
and is available to only new Catholic students.**

Please become a sponsor, and indicate your level of support below:

_____ Trustee Level - \$5,000 - includes 10 tickets to the buffet.
(\$4,800 tax deductible)

_____ Superintendent Level - \$2,500 - includes 8 tickets to the buffet
(\$2,340 tax deductible)

_____ Principal Level - \$1,000 - includes 6 tickets to the buffet
(\$880 tax deductible)

_____ Teacher Level - \$ 500 - includes 4 tickets to the buffet
(\$420 tax deductible)

_____ Student Level - \$ 250 - includes 2 tickets to the buffet
(\$210 tax deductible)

_____ Other amount - \$ _____

*Please print the name of donor(s) or business exactly as you would like it
acknowledged in the event program.*

(Mark here if you do NOT wish to be acknowledged in program _____)

Personal Name (or Business Name) _____

Address _____
(street) (City) (zip code)

Telephone _____ Email _____

Mail check & form to: Breakfast with the Bishop
c/o St. John Vianney School
940 Keolu Drive
Kailua, Hi. 96734

Calling for Tropical plants and arrangers For Breakfast with the Bishop

Please donate tropical flowers and plants for the 2024 Breakfast With the Bishop. We are looking for clippings from ti plants, ferns, palms, ginger, heliconia, anthuriums, Song of Indias and any other colorful tropicals. Please drop off floral donations on:

Friday, January 26 from 9am to Noon at the Parish Hall.



Learn how to make striking flower arrangements

like the ones pictured here. Your work will be viewed and admired by those who attend the 13th annual Breakfast with the Bishop.

Who should attend? Anyone who wants to learn how to arrange flowers.

When? Saturday January 27, 2024 at 8:30 am

Where? St John Vianney Parish Hall

Registration Fee: Free!!!

How to register? Send an email to garylwiseman@aol.com or text to 808 224-0724, list the names of those attending and just state "I'll be there to make flower arrangements on Saturday (or ask about another time)!"

SPACE IS LIMITED, SO REGISTER TODAY!!

Robert M. Mondoy *presents an*
All-Beethoven
Concert



Program:

Piano Sonata #8 in Cm, Op. 13, “Sonata Pathétique”, 1798
Piano Sonata #14 in C#m, Op.27 No.2 “Moonlight”, 1801
Piano String Quartet No. 2 in D, WoO 36, 1785, featuring a
guest String Quartet group



A free concert featuring selected works by Ludwig van Beethoven.

February 2, Friday, 7:00 p.m., 2024

at St. John Vianney 920 Keolu Dr. HI 96734



r.s.v.p. requested but not required at sjvkailuaparish@rcchawaii.org

You Tube: Rob Mondoy plays



ROMAN CATHOLIC CHURCH IN THE STATE OF HAWAII
DIOCESE OF HONOLULU
WITNESS TO JESUS

Memorandum

TO: All Clergy, Religious Orders, Catholic Schools & Parishes

FROM: Rev. Alfred Omar Guerrero, Director of the Office of Worship

DATE: January 16, 2024

RE: **Diocese of Honolulu 2024 Lenten Regulations (Updated 1/16/2024)**

FASTING

- ❖ In the dioceses in the United States, Catholics aged 18 through 59 are bound to fast on both Ash Wednesday (**February 14, 2024**) and Good Friday (**March 29, 2024**).
- ❖ To *fast* means to consume one full meal a day at most, although taking of other, smaller quantities of food at the other customary mealtimes is permitted. Food and drink between meals (excepting water and medicine) is not permitted on days of fasting.

ABSTINENCE FROM MEAT

- ❖ Catholics aged 14 and up are to abstain from meat on Ash Wednesday, all Fridays of Lent, and Good Friday.
- ❖ To abstain means refraining from eating beef, veal, pork, or poultry at least, although eggs and milk products are acceptable. The consumption of fish and shellfish is permitted, though the penitential character of the abstinence should be kept in mind.

EASTER DUTY

- ❖ All the faithful, after they have been initiated into the Most Holy Eucharist, are bound by the obligation of receiving Communion at least once a year. This precept is to be fulfilled during the Easter Season unless it is fulfilled, for a just cause, at some other time during the year. This period is extended to include all the weeks of Lent and the Easter Season up to Trinity Sunday (**May 26, 2024**).

LENTEN PRACTICES

- ❖ The faithful are encouraged during Lent to attend daily Mass, receive Holy Communion, participate in penance services, and receive sacramental absolution; to take part in public and private exercises of piety, give generously to works of religion and charity, perform acts of kindness toward the sick, aged, and the poor; to practice voluntary self-denial, especially

regarding food, drink, and worldly amusements; and to pray more fervently, particularly for the intentions of the Holy Father.

- ❖ Ash Wednesday, the first day of Lent, falls this year on **February 14th**. Ashes are to be blessed as a sign of our entry into a season of conversion, repentance, and reconciliation. Ashes are to be blessed by a bishop, priest, or deacon. Others may be associated with the clergy in the distribution of ashes.
- ❖ Funeral Masses may not be celebrated on Holy Thursday, Good Friday, or Holy Saturday, nor on the Sundays of Lent. When pastoral reasons require that a funeral be celebrated on these days, only a Funeral Outside of Mass may be held.
- ❖ To afford the faithful opportunities to participate in Lenten prayer services, pastors are encouraged to have such prayer services at least twice a week, including the Way of the Cross on Fridays, Exposition and Benediction, Evening Prayer, and evening Masses. A homily or instruction should be included.

BLESSING OF THE OILS AND CONSECRATION OF THE CHRISM

- ❖ In order to allow participation of Catholics throughout the islands, the Sacred Oils will be blessed during the Chrism Mass to be celebrated in several locations. All are encouraged to join in one of the following celebrations:
 - a. Kauai: **Tuesday, March 5th at 6:00p.m., St. Raphael Church, Koloa.**
 - b. Maui-Lanai: **Thursday, March 14th at 7 p.m., Holy Rosary Church, Paia.**
 - c. Big Island: **Thursday, March 21st at 5:30 p.m., St. Joseph Church, Hilo.**
 - d. Oahu-Molokai: **Tuesday, March 26th at 7 p.m., Co-Cathedral of St. Theresa, Honolulu.**

THE SACRED PASCHAL TRIDUUM

“Since Christ accomplished his work of human redemption and of the perfect glorification of God principally through his Paschal Mystery, in which by dying he has destroyed our death, and by rising restored our life, the sacred Paschal Triduum of the Passion and Resurrection of the Lord shines forth as the high point of the entire liturgical year” (*Universal Norms on the Liturgical Year and the Calendar, #18*). Three major liturgical principles may be of help here:

- a. The Triduum may be viewed a single liturgical action that occurs over a period of three days.
- b. The Triduum is not part of Lent, but in its entirety, celebrates the Easter event.
- c. The entire focus of the Triduum is on the Triumph of the Cross and the Resurrection.

NOTE: The above directives should be published in parish bulletins for the benefit of the faithful, adding any specific parish or vicariate events. What follows pertains only to clergy and liturgy planners and need not be published for parishioners.

EUCCHARISTIC PRAYERS FOR RECONCILIATION

- ❖ Priests should consider using the two Eucharistic Prayers for Reconciliation from time to time during the season of Lent.

THE PASCHAL CANDLE

- ❖ “The Paschal candle should be prepared, which for effective symbolism must be made of wax, never be artificial, be renewed each year, be only one in number, and be of sufficiently large size, so that it may evoke the truth that Christ is the light of the world. It is blessed with the signs and words prescribed in the Missal.”

[Note: Since the Paschal candle is to be lit for all liturgies during the Easter season and during baptisms and funerals, it often happens that the candle burns down so much that it no longer is a sign that clearly proclaims Christ’s victory over the darkness of sin and death. To prevent this from happening, parishes are encouraged to purchase candles that will be able to be proper symbols until the following Easter Vigil. In the Diocese of Honolulu, if the pastor judges that the Paschal candle blessed at the Easter Vigil is no longer able to be the sign it is meant to be, the parish should replace it with a new Easter candle. However, there is no special ceremony for blessing the second candle. It should simply be prepared in the sacristy with the proper date, then placed in the candle holder.]

- ❖ A glass chimney is recommended to shield the flame of the Paschal Candle at the Easter Vigil liturgy from the time it is lit until it is safely standing in its place in the church.

THE EASTER DISMISSAL WITH ALLELUIAS

- ❖ The dismissal, from the Easter Vigil through the Octave of Easter, ending with the Second Sunday of Easter, inclusive, should be followed by a double Alleluia! preferably sung. The same is true for the liturgies of Pentecost Sunday and its Vigil. *The double Alleluia is not added at other liturgies during the Easter season.*

When pastoral necessity requires it, the local Ordinary may allow duplicate liturgies on Holy Thursday and Good Friday, but not the Easter Vigil.

Please feel free to contact me at the Office of Worship, 808-585-3342 or alguerrero@rcchawaii.org, should you have any questions.

Blessings!

LET THE SPIRIT GUIDE YOU
DISCERN THE VOCATION OF
DEACON



DIOCESE OF HONOLULU | OFFICE OF PERMANENT

DEACON FORMATION

ABOUT US

The Permanent Deacon Formation Program is a five-year intensive program that prepares men spiritually, intellectually, and pastorally for Ordination. Men (and if married, their wives) will be formed and sent to teach, to guard and to bear witness to, and to serve the Church through their witness to Jesus, and their diaconal ministries of Word, Service and Charity.

INQUIRY WEEKENDS

These weekend retreats offer a spiritually enriching encounter, filled with valuable information, providing men and their wives a profound experience to deeply explore the diaconate vocation. **Whether you've felt a diaconal calling or have just a faint inkling of one, you should attend.** To be considered for the next cohort, applicants must attend one of these mandatory weekends, with their spouses if married.

- April 12 - 14
- May 3 - 5
- June 14 - 16

CONTACT US

We invite you to reserve a space online at our website:

catholicahawaii.org/formation

For questions and concerns:
deaconformation2@rcchawaii.org

Or call us at:
(808) 203-6777



All accommodations, plus airfare for neighbor islanders will be covered by the program.

WWW.CATHOLICAHAWAII.ORG/FORMATION

TUITION SCHOLARSHIP PROGRAM Deadlines & Frequently Asked Questions

Deadlines and Notifications

Application Window – December 15, 2023 to March 1, 2024

Completed applications, required documents and \$40 application fee are due to FACTS. Late applications WILL NOT be accepted.

Notification Window - April 23 - 28, 2024

Notification emails will be sent informing you if you will/will not receive a tuition scholarship. Students who are in preschool/JK will not receive an email.

Award Check Sent - September 30, 2024

Tuition Scholarship checks are sent to schools for credit to student's tuition account. Check your child's tuition account at the end of October to ensure the scholarship has been posted.

Note: The AEF tuition scholarship can only be applied to the cost of tuition (lunch, morning/afterschool care, books, etc. are not eligible). The AEF tuition scholarship cannot be used as a refund if a recipient has a zero tuition account balance.

Scholarship Eligibility & Application Process

How do I apply? Use this link - <http://www.augustinefoundation.org/sign-in/>

Who is eligible for a scholarship? All students (grades K-12) who will attend a Hawaii Catholic School during the upcoming school year. Students do not have to be currently enrolled to apply for a scholarship, but you do need to be officially enrolled at the time the scholarship is awarded.

How much are the scholarships? The amount of the tuition scholarship varies, typically ranging from \$500 to \$1,750.

What about students who are in preschool or junior kindergarten? Due to our limited funding, we do not provide scholarships to children in preschool or junior kindergarten. Although, the AEF Tuition Scholarship Program does not provide scholarships to preschools/ELCs, some preschools/ELCs use our application to evaluate your level of need for their own school's financial aid program. Please inquire at your preschool/ELC.

What if I am applying for more than one student or to different Catholic schools? One application per family, even if the children attend different schools or you are applying to different schools.

Do I have to make a certain amount of money to apply for a scholarship? No, any family can apply for a scholarship. Priority is given to families who have a financial need.

Do I have to be Catholic to apply? No, you do not need to be Catholic to apply.

Can students from public schools apply? Yes, if they intend to enroll in a Hawaii Catholic School in the upcoming school year.

Do I have to reapply each year? Yes, you must reapply for a tuition scholarship each year.

What if I am divorced, separated, or never married? The primary parent completes and submits the FACTS application, however the number of exemptions on the 1040 tax forms must correspond to the number listed as the household on the application form. If child(ren) is not documented as a dependent by the adult applying for the scholarship, the signed Federal 1040 tax forms from the person claiming the child(ren) are required. Both incomes and household size should be combined and reported on the application forms.

Why do I have to pay \$40? *The \$40 covers the cost of processing/evaluating your application by FACTS. Fees are assessed on a per-family basis, not a per-student basis. A family with two or more applicants would still pay \$40.*

What if I've already applied or submitted for financial aid with FACTS with another school or scholarship program for the upcoming school year? You will do one of two things, depending on if you have applied/not submitted your application or if you have submitted your application.

Submitted your Application: *You will need to update your FACTS financial aid application to include the Augustine Educational Foundation. Log-in to your existing financial aid application with FACTS. Once you log in access your Application Summary. On the Application Summary click on View Form to go into your submitted application. Go to the School Section, click on Add School/ Organization and search for Augustine Educational Foundation by name or by the zip code 96744. Once you have added Augustine Educational Foundation to the School Section, then you will need to go to the Student Section. Check the box for Augustine Educational Foundation under each student you are applying for. Once you save that information, you will need to answer any additional questions on the application related to the program. Incomplete sections will appear with a **red X** next to it. Complete all sections, then save the application to submit it for consideration.*

Applied, but haven't submitted your Application: *You will need to update your FACTS financial aid application to include the Augustine Educational Foundation. Log-in to your existing financial aid application with FACTS, go to the School Section and search for Augustine Educational Foundation by name or by the zip code 96744. Once you have added Augustine Educational Foundation to the School Section, then you will need to go to the Student Section if it has been completed, if not, proceed with the application from where you left off. In the Student Section, check the box for Augustine Educational Foundation under each student you are applying for. Once you save that information, you will need to answer any additional questions on the application related to the program. Incomplete sections will appear with a **red X** next to it. Complete all sections, then submit the application for processing.*

Application and Document Submission

How do I submit my application? *On-line, directly to FACTS via the on-line application portal. Paper application are not available. The AEF does not accept applications or any required documents. All documentation must be turned in directly to FACTS.*

Is the application process secure? *Yes. All documentation received is imaged upon receipt and then destroyed. Then, the application data becomes property of the AEF.*

How do I submit my documents? *Once you have completed and submitted your application on-line, directly to FACTS, you will have the opportunity to upload your documents at the end of your application and any time after, by logging back into your account.*

How do I pay the application fee? *The \$40 fee is paid via Credit Card or Electronic Bank Check (ACH).*

What if I cannot afford to pay the \$40 processing fee? Call the Foundation directly at (808) 203-6748.

Questions - Applying, Submitting Documents or Service Fee Processing: *Please contact FACTS directly by phone at 1-844-649-2921 – Monday – Thursday 7:30 a.m. to 9:00 p.m. CST and Friday 7:30 a.m. to 5:00 p.m. CST. You may also visit support on their website for FAQs – <https://factsmgt.com/parent-faqs/> or email info@factstuitionaid.com for assistance. Once you have created an account with FACTS you will also have a live chat feature once logged in.*

Further Questions? Contact Tonya Stevenson at (808) 203-6748 or tonya@augustinefoundation.org.

Tuition Scholarship Program Application Tips

Tip 1: All questions on the application marked with an asterisk (*) will have to be answered, even if it is a zero, they cannot be skipped.

Tip 2: Many times, you will need to “Save and Continue” to proceed – this button is at the bottom of the page – you need to scroll down to see this button. You can also “Save and Exit” and the application will save your place for when you return.

Tip 3: If you see a blue question mark by the question/answer box, you can click on it for helpful information related to the question.

Tip 4: Get a free scanner app on your mobile device (for example, CAMSCANNER or check your mobile device’s app store). You can take a picture of your document, upload it and save it as a PDF. Then, you send it you yourself via email/upload to your computer or upload to a drive (Google Drive, iCloud, OneDrive, Drop Box, etc.) on your mobile device. From either of those, you can easily upload the documents to your FACTS application. Uploaded documents for your application can be in a PDF or JPEG format. Another option is to simply take a photo of your document and upload the picture directly to the application from your phone.

Tip 5: You can review or update your application online by logging into your FACTS account and clicking “View Form”. The “Review” section has a print button if you would like a physical copy of your application.

Tip 6: After submitting your application, please log-in to FACTS and check your application status; you may need to submit additional documents. **Your application is not complete, until it says COMPLETE at the top.**

Tip 7: If you need any assistance navigating your FACTS account or help with the application, please contact FACTS at 1-844-649-2921.

***Reminder* - If you already submitted or applied for financial aid with FACTS with another school or scholarship program for the upcoming school year and would like to add the Augustine Educational Foundation to your application:** You will do one of two things, depending on if you have submitted your application or you have applied/not submitted your application.

Submitted your Application: You will need to update your FACTS financial aid application to include the Augustine Educational Foundation. Log-in to your existing financial aid application with FACTS. Once you log-in, access your Application Summary. On the Application Summary, click on View Form to go into your submitted application. Go to the School Section, click on Add School/ Organization and search for Augustine Educational Foundation by name or by the zip code 96744. Once you have added Augustine Educational Foundation to the School Section, then you will need to go to the Student Section. Check the box for Augustine Educational Foundation under each student you are applying for. Once you save that information, you will need to answer any additional questions on the application related to the program. Incomplete section will appear with a **red X** next to it. Complete all sections, then save the application to submit it for consideration.

Applied, but have not Submitted your Application: You will need to update your FACTS financial aid application to include the Augustine Educational Foundation. Log-in to your existing financial aid application with FACTS, go to the School Section and search for Augustine Educational Foundation by name or by the zip code 96744. Once you have added Augustine Educational Foundation to the School Section, then you will need to go to the Student Section if it has been completed, if not, proceed with the application from where you left off. In the Student Section, check the box for Augustine Educational Foundation under each student you are applying for. Once you save that information, you will need to answer any additional questions on the application related to the program. Incomplete sections will appear with a **red X** next to it. Complete all sections, then submit the application for processing.



The Augustine Educational Foundation Tuition Scholarship Program provides financial need based tuition scholarships to students in grades K-12 in Hawaii Catholic Schools.

How do you apply? Go to <http://www.augustinefoundation.org/sign-in/>

For more information please visit www.augustinefoundation.org and see our Scholarship FAQs.

TUITION SCHOLARSHIP PROGRAM Deadlines & Notifications

Application Window – December 15, 2023 to March 1, 2024

Completed applications, required documents and \$40 application fee are due to FACTS. Late applications WILL NOT be accepted.

Notification Window - April 23 - 28, 2024

Notification emails will be sent informing you if you will/will not receive a tuition scholarship. Students who are in preschool/JK will not receive an email.

Award Check Sent - September 30, 2024

Tuition Scholarship checks are sent to schools for credit to student's tuition account. Check your child's tuition account at the end of October to ensure the scholarship has posted.

Note: The AEF tuition scholarship can only be applied to the cost of tuition (lunch, morning/afterschool care, books, etc. are not eligible). The AEF tuition scholarship cannot be used as a refund if a recipient has a zero-tuition (\$0) account balance.

Tuition Scholarship Program 2024-2025 FACTS Application Document Checklist

Required Documents:

- 2023 W-2s/1099s – from all income sources**

- 2022 Federal Tax Return (including all schedules)**
- Child(ren) that are applying for a scholarship must be listed as a dependent on taxes submitted

- 2022 W-2s/1099s – from all income sources**

If applicable:

- SNAP/Food Stamp Benefit History for 2023**

- TANF/AFDC/Welfare Benefit History for 2023**

- 2023 Social Security/Disability Benefits Income**

- 2023 Worker’s Compensation/Unemployment Benefits**

- 2023 Other Taxable/Non-Taxable Income**

- Child Support Income Statement/Custodial or Court Documents**

- Housing Allowance (Military, Religious, Parsonage, Inc.)**

- Other requested documents per FACTS request**

Upload your documents before completing your application by getting a FREE scan app

Get a free scanner app on your mobile device (for example, CAMSCANNER or check your mobile device’s app store). You can take a picture of your document, upload it and save it as a PDF. Then, you send it you yourself via email/upload to your computer or upload to a drive (Google Drive, iCloud, OneDrive, Drop Box, etc.) on your mobile device. From either of those, you can easily upload the documents to your FACTS application. Uploaded documents for your application can be in a PDF or JPEG format. Another option is to simply take a photo of your document and upload the picture directly to the application from your phone.